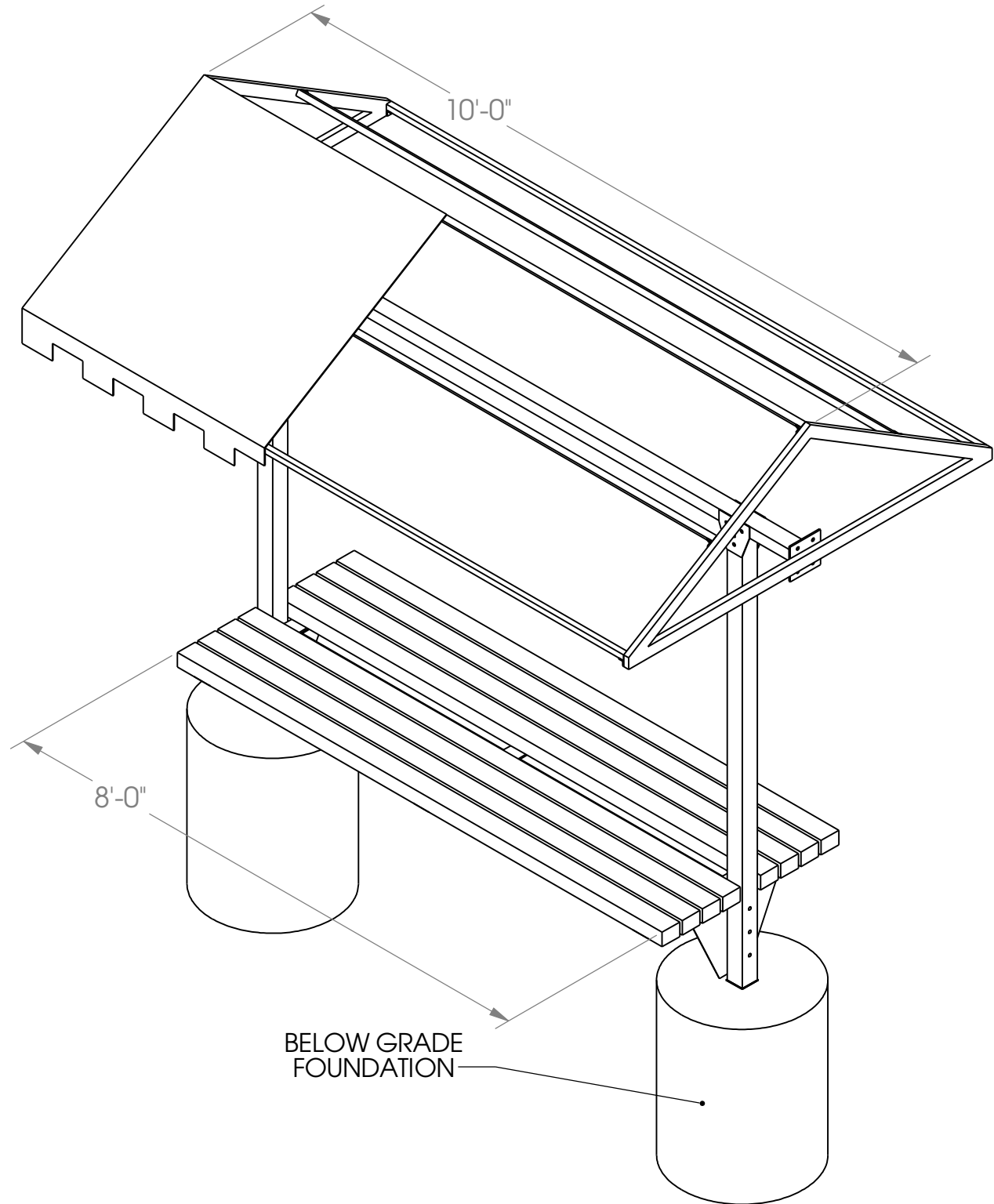


Cabana Bench 10' - Direct Burial



BELOW GRADE
FOUNDATION

ISOMETRIC VIEW

PROPRIETARY AND CONFIDENTIAL
THE INFORMATION CONTAINED IN THIS
DRAWING IS THE SOLE PROPERTY OF
SUNTRENDS INC. ANY
REPRODUCTION IN PART OR AS A WHOLE
WITHOUT THE WRITTEN PERMISSION OF
SUNTRENDS INC. IS
PROHIBITED.

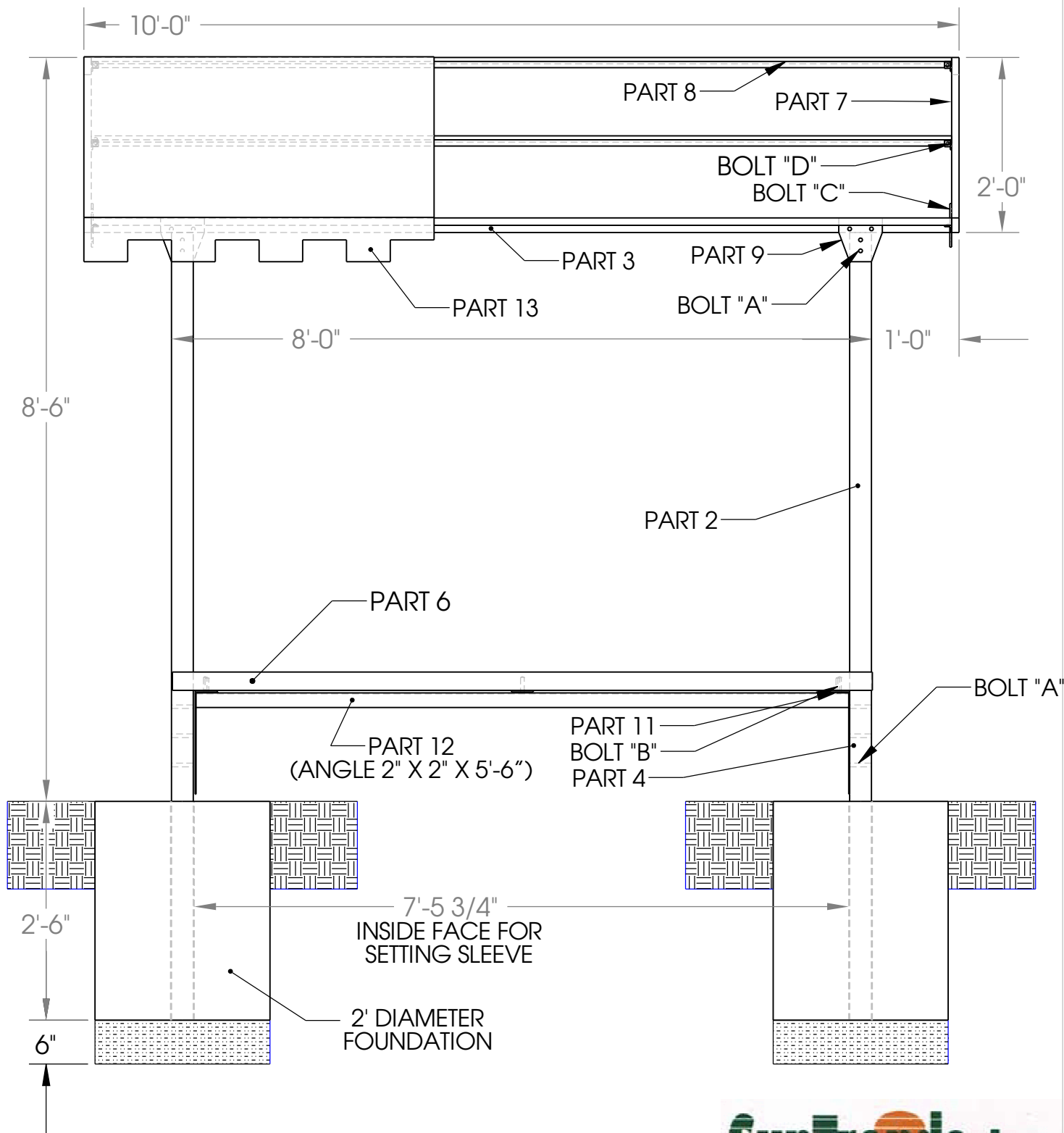
SunTrends, Inc.

P.O. BOX 101057
DENVER, CO 80250
303-744-2647

SCALE 1:21

SHEET 1 OF 5

Cabana Bench 10' - Direct Burial



FRONT VIEW

SunTrends, Inc.

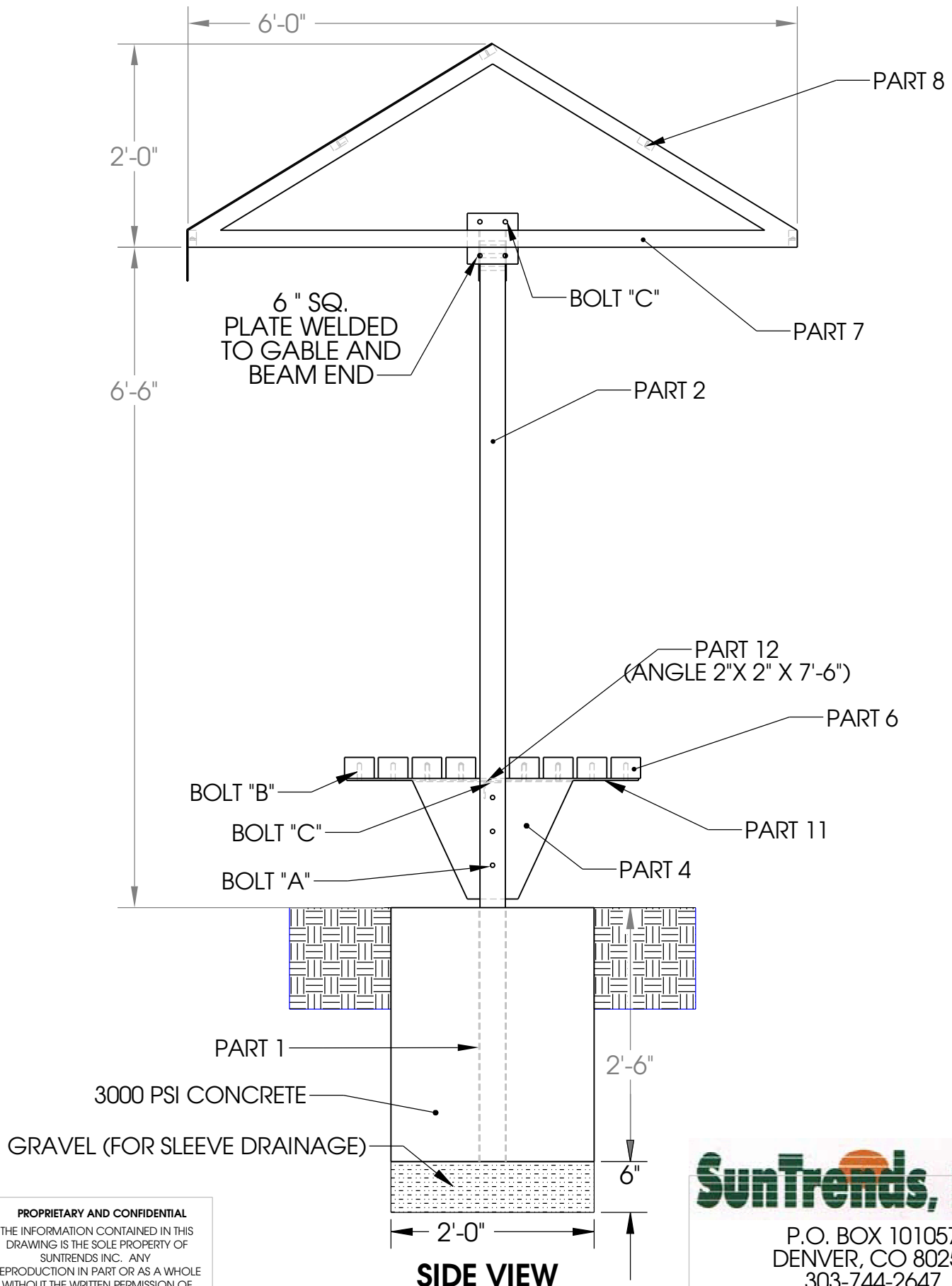
P.O. BOX 101057
DENVER, CO 80250
303-744-2647

SCALE 1:19

SHEET 2 OF 5

PROPRIETARY AND CONFIDENTIAL
THE INFORMATION CONTAINED IN THIS
DRAWING IS THE SOLE PROPERTY OF
SUNTRENDS INC. ANY
REPRODUCTION IN PART OR AS A WHOLE
WITHOUT THE WRITTEN PERMISSION OF
SUNTRENDS INC. IS
PROHIBITED.

Cabana Bench 10' - Direct Burial



PROPRIETARY AND CONFIDENTIAL
THE INFORMATION CONTAINED IN THIS DRAWING IS THE SOLE PROPERTY OF SUNTRENDS INC. ANY REPRODUCTION IN PART OR AS A WHOLE WITHOUT THE WRITTEN PERMISSION OF SUNTRENDS INC. IS PROHIBITED.

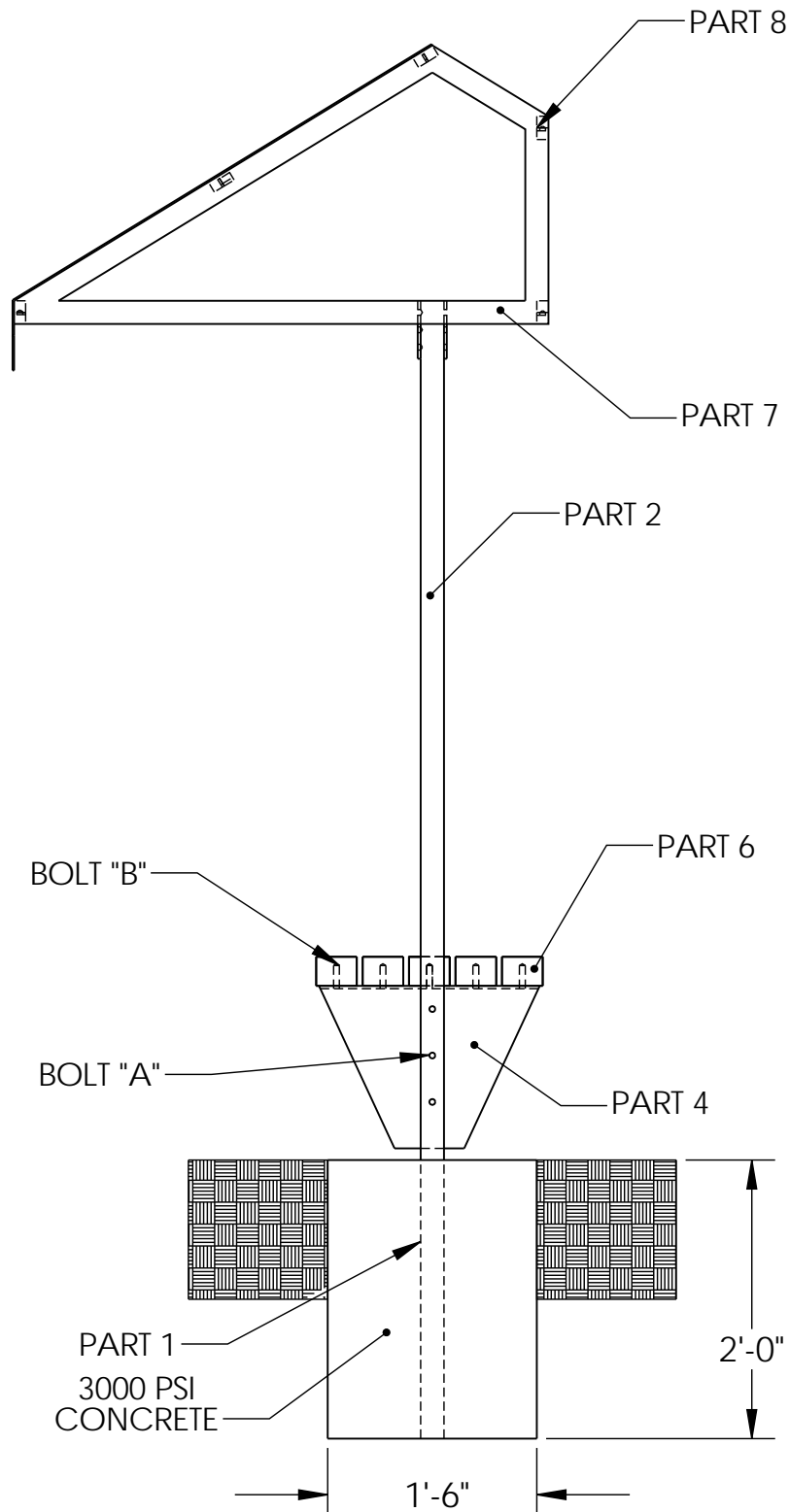
SunTrends, Inc.

P.O. BOX 101057
DENVER, CO 80250
303-744-2647

SCALE 1:18

SHEET 3 OF 5

Cabana Bench Modified 10' - Direct Burial



SIDE VIEW

PROPRIETARY AND CONFIDENTIAL
THE INFORMATION CONTAINED IN THIS
DRAWING IS THE SOLE PROPERTY OF
SUNTRENDS INC. ANY
REPRODUCTION IN PART OR AS A WHOLE
WITHOUT THE WRITTEN PERMISSION OF
SUNTRENDS INC. IS
PROHIBITED.

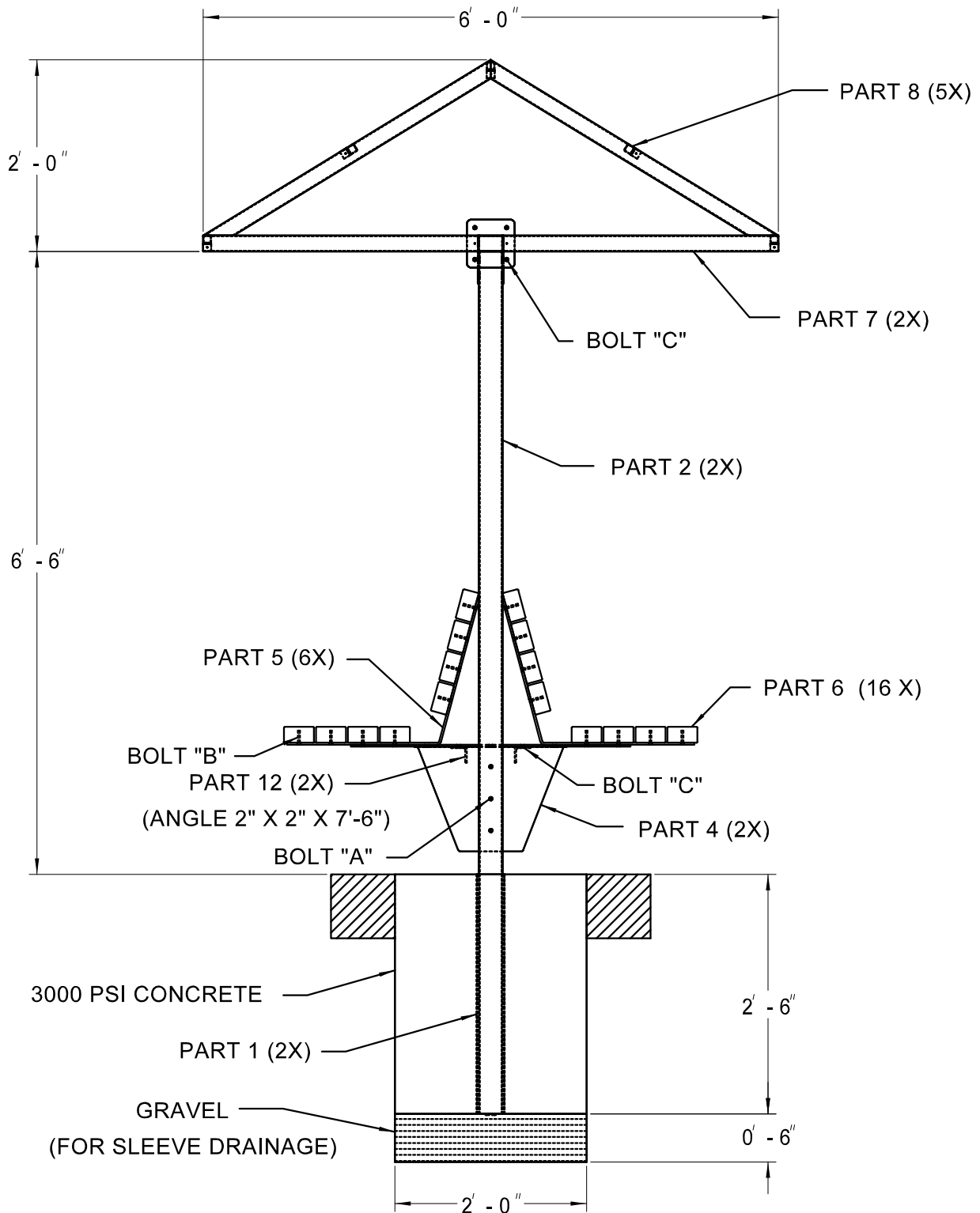
P.O. BOX 101057
DENVER, CO 80250
303-744-2647

SCALE 1:16

SHEET 3 OF 5

Cabana Two Sided Bench With Backrest 10'

- Direct Burial -



SIDE VIEW

SunTrends, Inc.

P.O. BOX 101057

DENVER, CO 80250

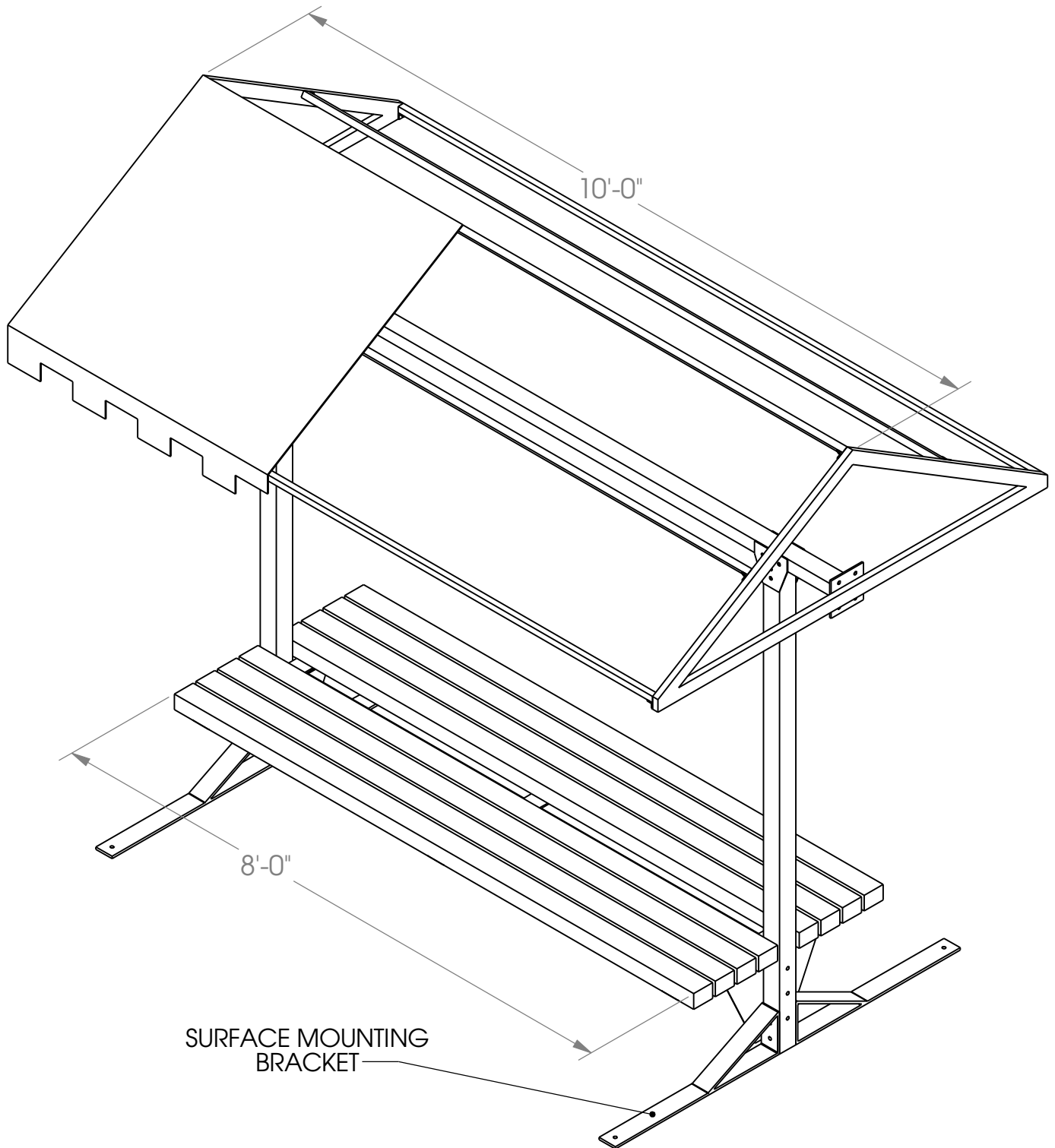
303-744-2647

SHEET 3 OF 5

PROPRIETARY AND CONFIDENTIAL

THE INFORMATION CONTAINED IN THIS
DRAWING IS THE SOLE PROPERTY OF
SUNTRENDS INC. ANY
REPRODUCTION IN PART OR AS A WHOLE
WITHOUT THE WRITTEN PERMISSION OF
SUNTRENDS INC. IS
PROHIBITED

Cabana Bench 10' - Surface Mount



ISOMETRIC VIEW

PROPRIETARY AND CONFIDENTIAL
THE INFORMATION CONTAINED IN THIS
DRAWING IS THE SOLE PROPERTY OF
SUNTRENDS INC. ANY
REPRODUCTION IN PART OR AS A WHOLE
WITHOUT THE WRITTEN PERMISSION OF
SUNTRENDS INC. IS
PROHIBITED.

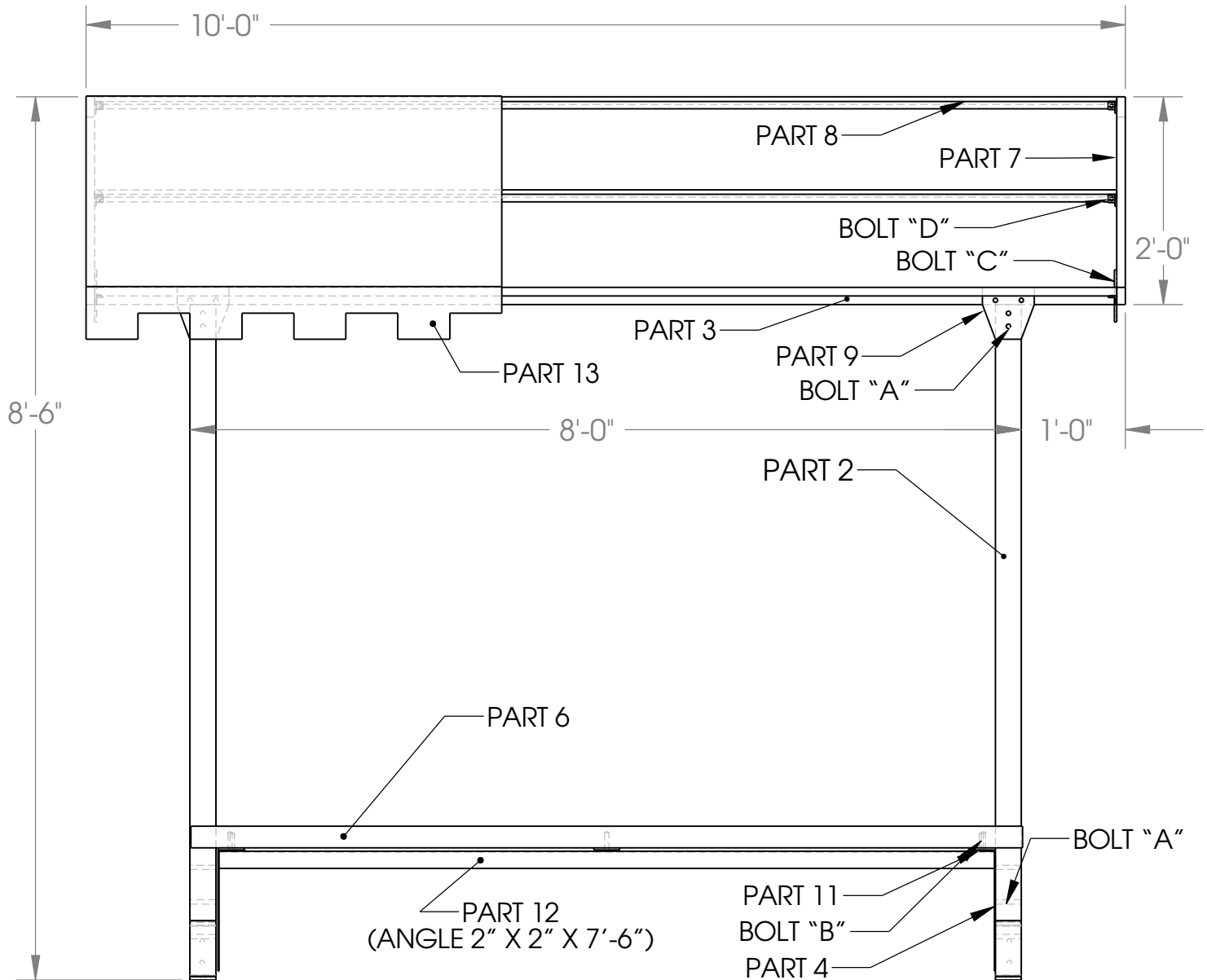
SunTrends, Inc.

P.O. BOX 101057
DENVER, CO 80250
303-744-2647

SCALE 1:19

SHEET 1 OF 5

Cabana Bench 10' - Surface Mount



PROPRIETARY AND CONFIDENTIAL

THE INFORMATION CONTAINED IN THIS
DRAWING IS THE SOLE PROPERTY OF
SUNTRENDS INC. ANY
REPRODUCTION IN PART OR AS A WHOLE
WITHOUT THE WRITTEN PERMISSION OF
SUNTRENDS INC. IS
PROHIBITED.

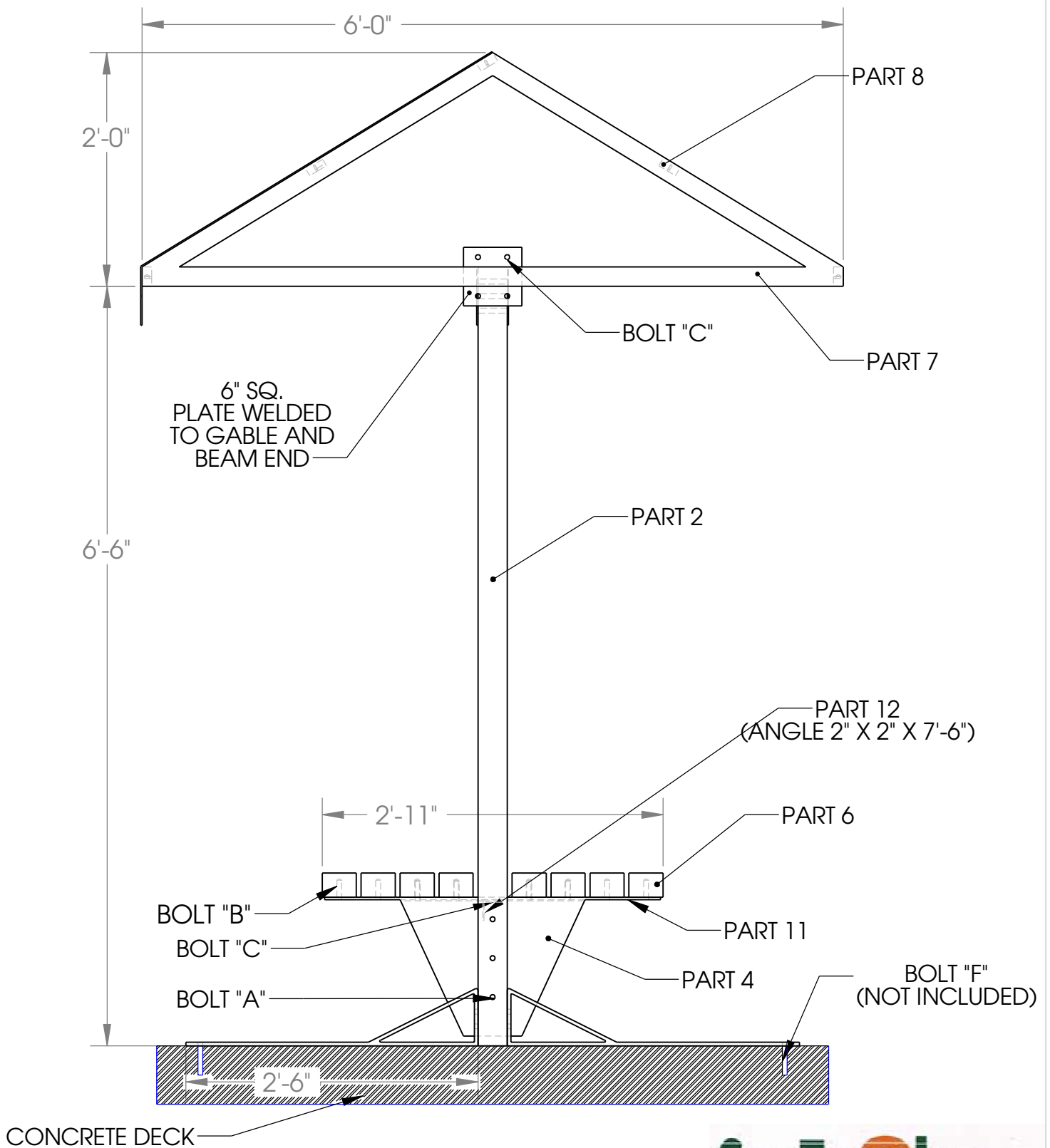
SunTrends, Inc.

P.O. BOX 101057
DENVER, CO 80250
303-744-2647

SCALE 1:18

SHEET 2 OF 5

Cabana Bench 10' - Surface Mount



PROPRIETARY AND CONFIDENTIAL

THE INFORMATION CONTAINED IN THIS DRAWING IS THE SOLE PROPERTY OF SUNTRENDS INC. ANY REPRODUCTION IN PART OR AS A WHOLE WITHOUT THE WRITTEN PERMISSION OF SUNTRENDS INC. IS PROHIBITED.

SunTrends, Inc.

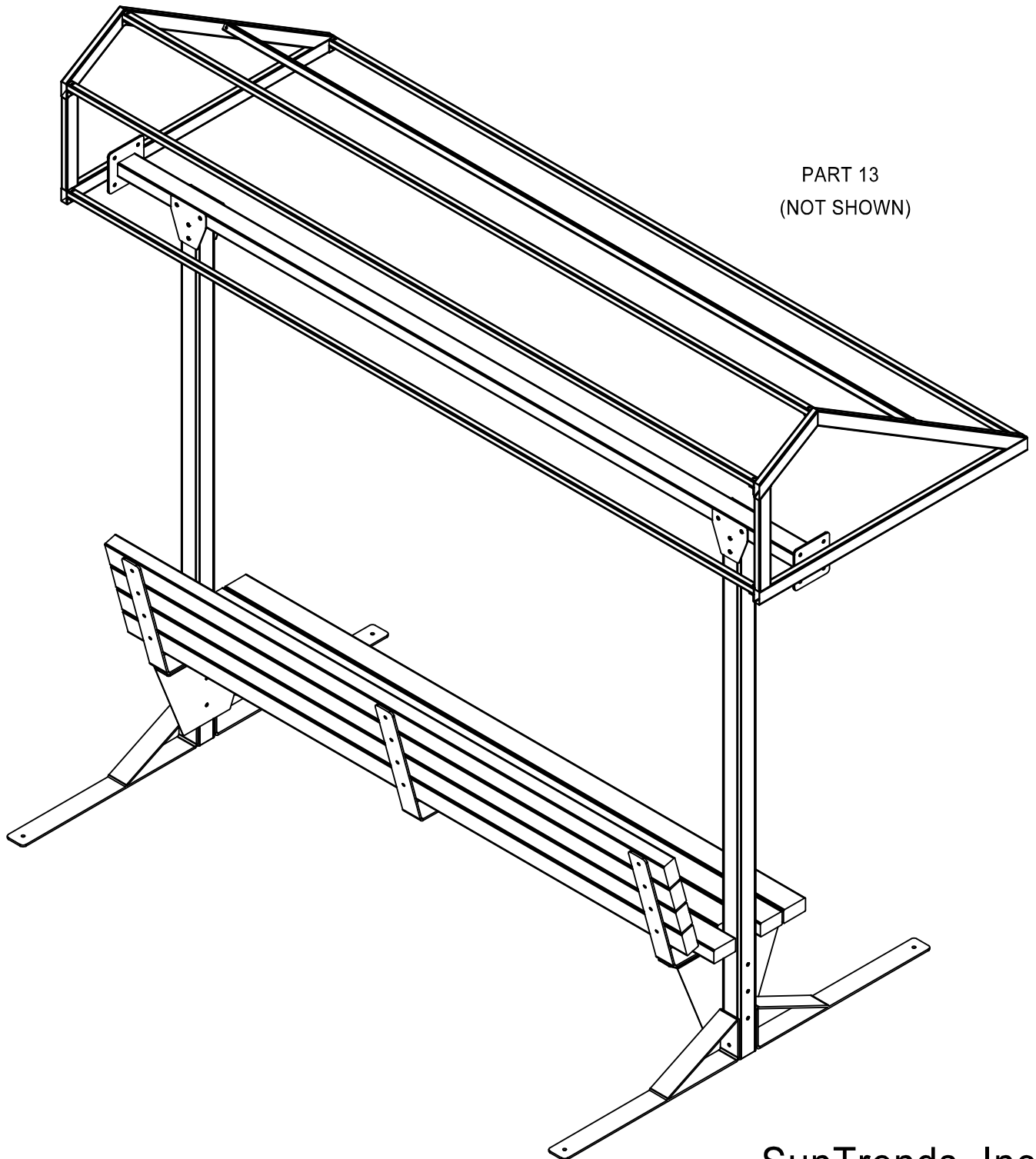
P.O. BOX 101057
DENVER, CO 80250
303-744-2647

SCALE 1:14

SHEET 3 OF 5

Cabana Bench With Back Modified 10'

- Surface Mount -



ISOMETRIC VIEW

SunTrends, Inc.

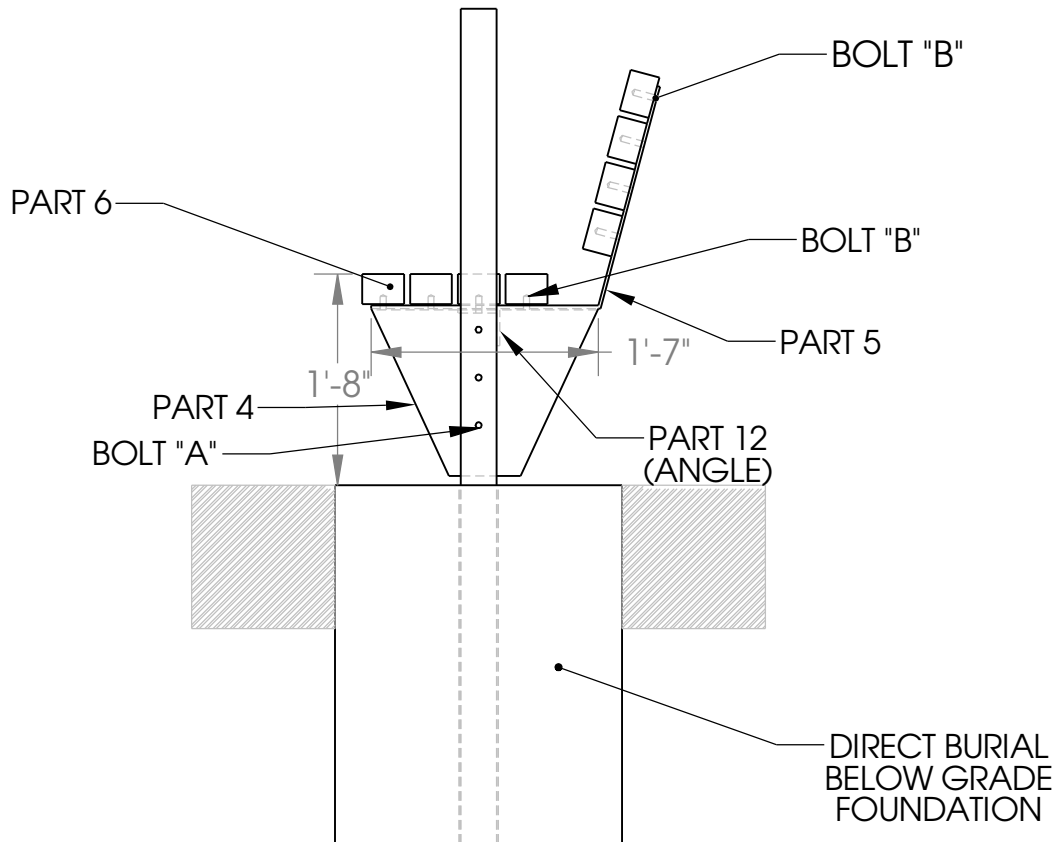
P.O. BOX 101057

DENVER, CO 80250

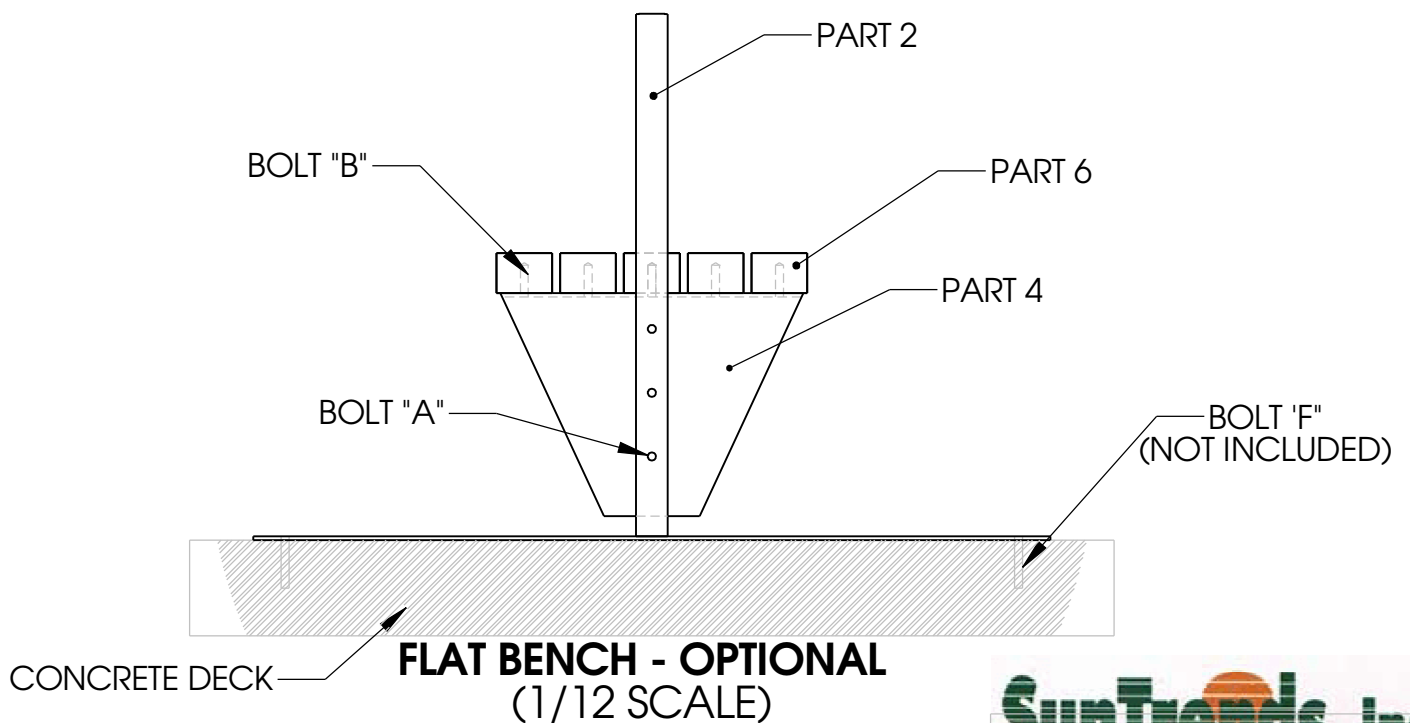
303-744-2647

SHEET 1 OF 5

PROPRIETARY AND CONFIDENTIAL
THE INFORMATION CONTAINED IN THIS
DRAWING IS THE SOLE PROPERTY OF
SUNTRENDS INC. ANY
REPRODUCTION IN PART OR AS A WHOLE
WITHOUT THE WRITTEN PERMISSION OF
SUNTRENDS INC. IS
PROHIBITED



BACKREST BENCH - OPTIONAL
(1/16 SCALE)



FLAT BENCH - OPTIONAL
(1/12 SCALE)

SunTrends, Inc.

P.O. BOX 101057
DENVER, CO 80250
303-744-2647

PROPRIETARY AND CONFIDENTIAL
THE INFORMATION CONTAINED IN THIS
DRAWING IS THE SOLE PROPERTY OF
SUNTRENDS INC. ANY
REPRODUCTION IN PART OR AS A WHOLE
WITHOUT THE WRITTEN PERMISSION OF
SUNTRENDS INC. IS
PROHIBITED.

Installation Guidelines

Cabana Bench 10'-Surface Mount

Tools Needed: Ratchet set or wrenches

Step 1: Posts and Beam

Attach surface mount legs (Part #10) to 3"x3" posts (Part #2) with bolts "A". Place beam (Part #3) on top of posts (Part #2) making sure bolt holes line up and secure with bolts "A" and column plates (Part #9)

Step 2: Seat Plates

Attach the (2) seat plates (Part #4) to the inside face of the 3"x3" posts (Part #2) with bolts "A".

Step 3: Angle iron

Attach (1) 2"x2" angle (Part #12) under seat plates (Part #4) with bolt "C". Note: Angle to be located between posts at center of seat plate

Step 4: Bench Straps and Durawood Slats

Sandwich the (2) end bench straps (Part #11) between seat plates (Part #4) and Durawood slats (Part #6) and secure with lag bolts "B". The middle bench strap to be placed on top of angle (Part #12), attached with bolt "C", and secured to center of Durawood slats with lag bolts "B"

***Alternate-Bench with Backrest: Substitute bench strap (Part #11) with BENT bench strap (Part #5) and follow steps above.

Step 5: Gable Ends

Secure gable ends (Part #7) to each end of beam (Part #3) with bolts "C".

NOTE: 6"x6" plates to meet at beam end and center of gable end.

Step 6: Perlins

Attach (5) perlins (Part #8) to gable ends with bolts "D".

Step 7: Fabric Canopy

1. Unfold canvas (Part #13) and drape it over the canopy frame. (The grommetted laces are on the inside of the cover).
2. Pull the cover down over the corners making sure the canvas is square with the frame and wrinkles are pulled taut.
3. Starting at the center of the short sides (where the beam and gable meet) lace the rope through the grommets, working toward the other end. Pull the cover and rope tight as you work toward the other end. Tie off loose ends.

Step 8: Miscellaneous

Use can of black spray (semi gloss) paint to touch up scratches from shipping or erection.

Installation Guidelines

Cabana Bench 10'-Direct Burial

Tools Needed: Ratchet set or wrenches, hand level, shovel, wheel barrow.

Step 1: Foundation Excavation

Excavate holes on level ground for foundation of 2'-0" diameter by 3'-0" deep. Holes spaced at 7'-9" to center of each hole (for either a Cabana Bench 8 or Cabana Bench 10). Place approximately 6" of gravel in holes to an elevation of 2'6" deep. (Gravel used to support posts at desired elevation while concrete is being poured and to drain post sleeves.

Step 2: Posts and Beam

Slide 3"x3" sleeves (Part #1) on to posts (Part #2) and place beam (Part #3) on top of posts making sure bolt holes line up. Secure with bolts "A" and column plates (Part #9)

Step 3: Foundation Placement

Set posts and beam on top of gravel base. Check the elevation to insure proper depth of posts. While plumbing posts vertically with a hand level, posts and beam need to be secured in place, using guy ropes or 2"x4" braces. Ropes need sufficient tautness to insure stability while pouring concrete. Concrete may then be poured, taking care not to move posts. Re-check the plumb after pouring concrete.

NOTE: Concrete needs 24 hours of curing time, prior to erecting rest of bench.

Step 4: Seat Plates

Attach the (2) seat plates (Part #4) to the inside face of the 3"x3" posts (Part #2) with bolts "A".

Step 5: Angle iron

Attach (1) 2"x2" angle (Part #12) under seat plates (Part #4) with bolt "C".

Note: Angle to be located between posts at center of seat plate

Step 6: Bench Straps and Durawood Slats

Sandwich the (2) end bench straps (Part #11) between seat plates (Part #4) and Durawood slats (Part #6) and secure with lag bolts "B". The middle bench strap to be placed on top of angle (Part #12), attached with bolt "C", and secured to center of Durawood slats with lag bolts "B"

*****Alternate-Bench with Backrest:** Substitute bench strap (Part #11) with BENT bench strap (Part #5) and follow steps above.

Step 7: Gable Ends

Secure gable ends (Part #7) to each end of beam (Part #3) with bolts “C”.

NOTE: 6”x6” plates to meet at beam end and center of gable end.

Step 8: Perlins

Attach (5) perlins (Part #8) to gable ends with bolts “D”.

Step 9: Fabric Canopy

1. Unfold canvas (Part #13) and drape it over the canopy frame. (The grommetted laces are on the inside of the cover).
2. Pull the cover down over the corners making sure the canvas is square with the frame and wrinkles are pulled taut.
3. Starting at the center of the short sides (where the beam and gable meet) lace the rope through the grommets, working toward the other end. Pull the cover and rope tight as you work toward the other end. Tie off loose ends.

Step 10: Miscellaneous

Use can of black spray (semi gloss) paint to touch up scratches from shipping or erection.

PART AND BOLT SCHEDULE - CABANA 10" SURFACE MOUNT

NUMBER	QUANTITY	DESCRIPTION
2	2	3" SQ. STEEL TUBE COLUMN
3	1	2" X 3" STEEL TUBE BEAM
4	2	STEEL SEAT PLATE
5	3	BENT STEEL BENCH STRAP (OPTION)
6	8	3" X 4" NOMINAL DURAWOOD PLASTIC SLATS
7	2	GABLE END FRAME
8	5	1" SQ. STEEL TUBE PURLINS
9	4	6" X 6" COLUMN PLATE
10	4	STEEL SURFACE MOUNT LEGS
11	3	STEEL BENCH STRAP (3" WIDE X 34" LONG)
12	1	2" X 2" ANGLE
13	1	CANVAS CANOPY
"A"	18	3/8" X 4" HEX HEAD BOLT W/ NUT & WASHER
"B"	24	3/8" X 2" HEX HEAD LAG SCREW W/ WASHER
"C"	11	3/8" X 1" HEX HEAD BOLT W/ NUT & WASHER
"D"	10	1/4" X 1.1/2" HEX HEAD BOLT W/ NUT & WASHER
"F"	4	1/2" X 3.1/2" EXPANSION BOLT (OPTION) NOT INCL.

PART AND BOLT SCHEDULE - CABANA 10' DIRECT BURIAL

NUMBER	QUANTITY	DESCRIPTION
1	2	3 1/2" SQ. STEEL POST SLEEVE
2	2	3" SQ. STEEL TUBE COLUMN
3	1	2" X 3" STEEL TUBE BEAM
4	2	STEEL SEAT PLATE
5	3	BENT STEEL BENCH STRAP (OPTION)
6	8	3" X 4" NOMINAL DURAWOOD PLASTIC SLATS
7	2	GABLE END FRAME
8	5	1" SQ. STEEL TUBE PURLINS
9	4	6" X 6" COLUMN PLATE
11	3	BENCH STRAP (3" WIDE X 34" LONG)
12	1	2" X 2" ANGLE
13	1	FABRIC CANOPY
"A"	14	3/8" X 4" HEX HEAD BOLT W/ NUT & WASHER
"B"	24	3/8" X 2" HEX HEAD LAG SCREW W/ WASHER
"C"	11	3/8" X 1" HEX HEAD BOLT W/ NUT & WASHER
"D"	10	1/4" X 1.1/2" HEX HEAD BOLT W/ NUT & WASHER
"F"	4	1/2" X 3.1/2" EXPANSION BOLT (OPTION) NOT INCL.