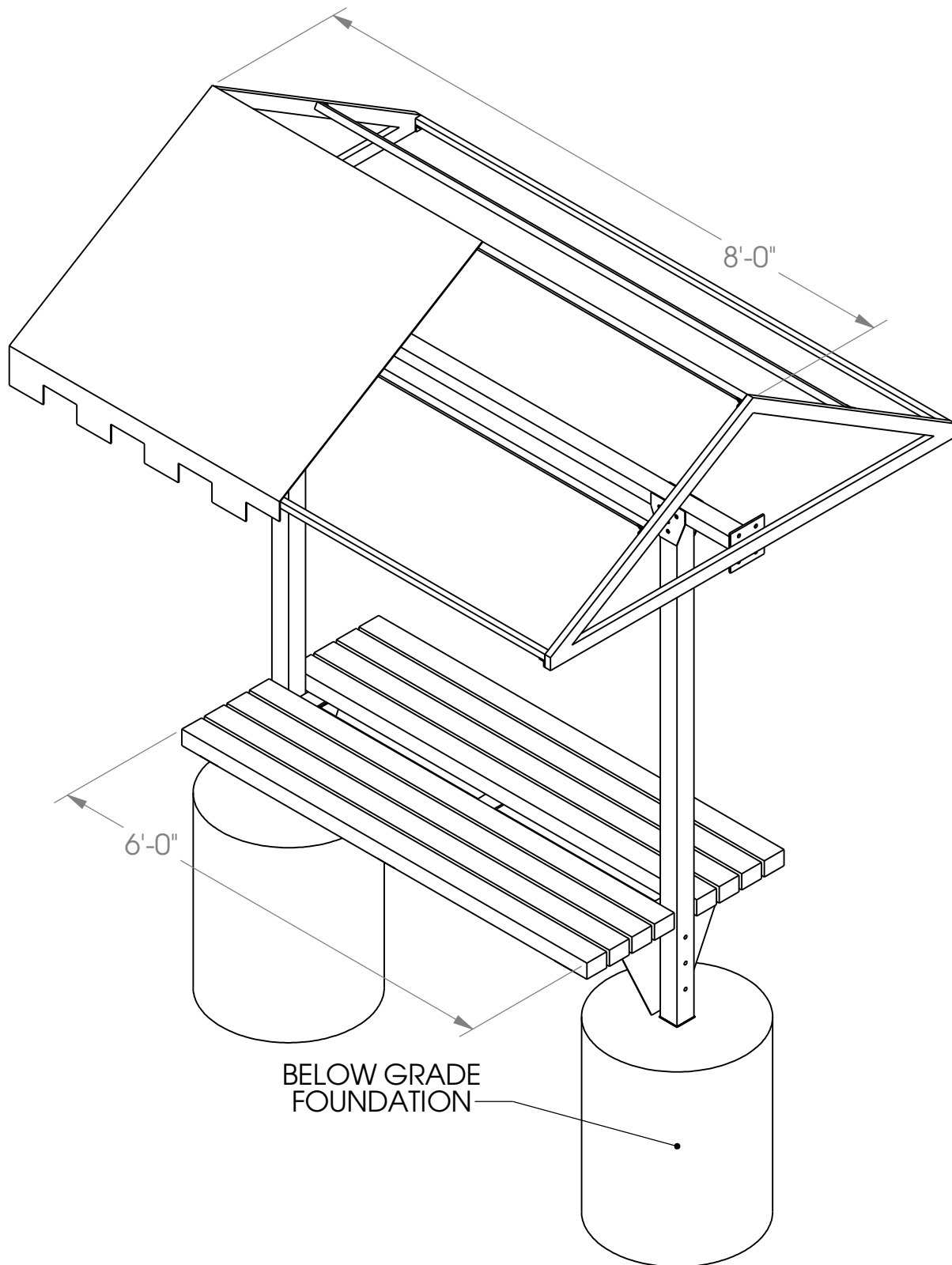


# Cabana Bench 8' - Direct Burial



BELOW GRADE  
FOUNDATION

**ISOMETRIC VIEW**

**PROPRIETARY AND CONFIDENTIAL**

THE INFORMATION CONTAINED IN THIS  
DRAWING IS THE SOLE PROPERTY OF  
SUNTRENDS INC. ANY  
REPRODUCTION IN PART OR AS A WHOLE  
WITHOUT THE WRITTEN PERMISSION OF  
SUNTRENDS INC. IS  
PROHIBITED.

**SunTrends, Inc.**

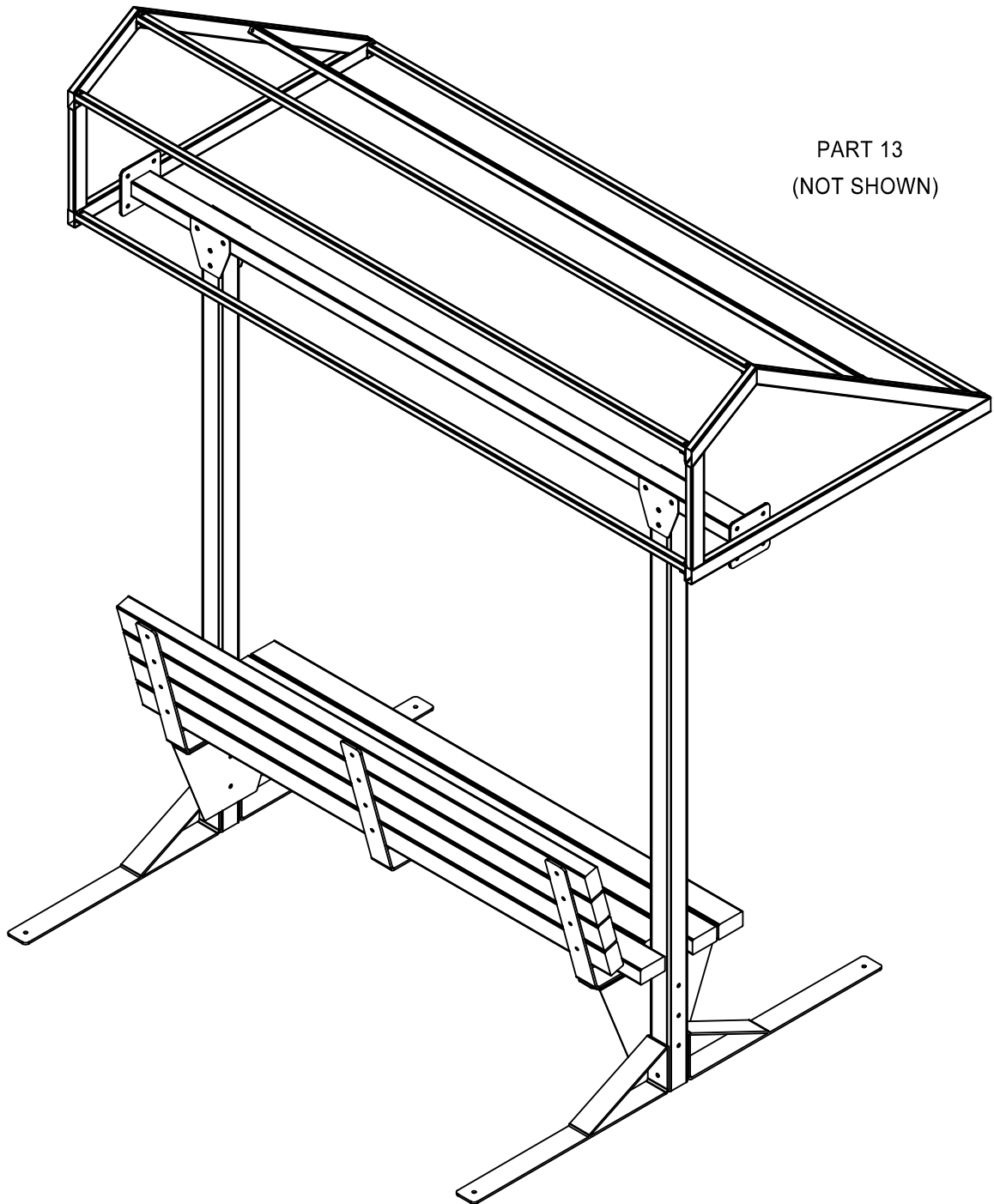
P.O. BOX 101057  
DENVER, CO 80250  
303-744-2647

SCALE 1:19

SHEET 1 OF 5

# Cabana Bench With Back Modified 8'

## - Surface Mount -



PART 13  
(NOT SHOWN)

ISOMETRIC VIEW

SunTrends, Inc.

P.O. BOX 101057

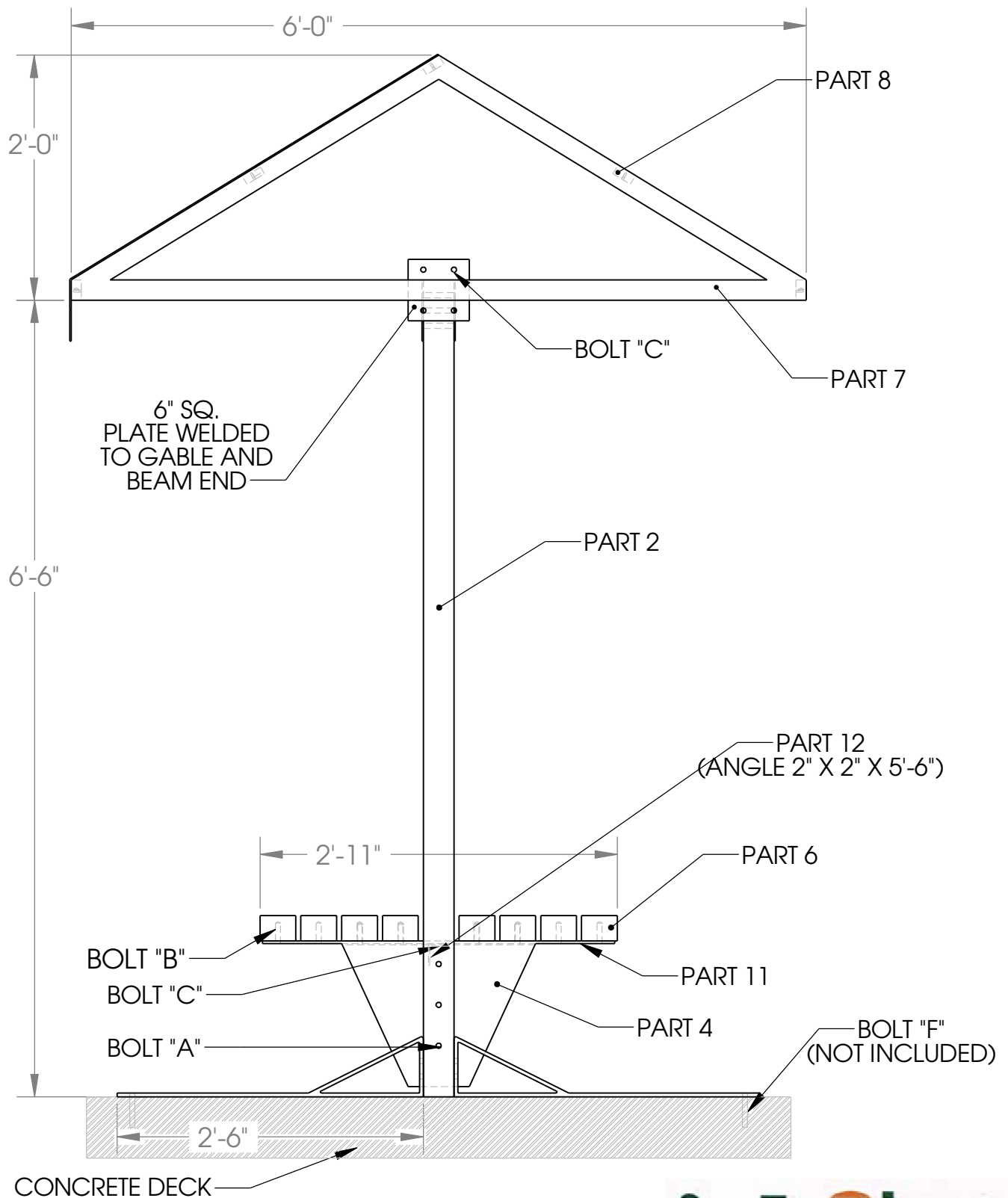
DENVER, CO 80250

303-744-2647

SHEET 1 OF 5

PROPRIETARY AND CONFIDENTIAL  
THE INFORMATION CONTAINED IN THIS  
DRAWING IS THE SOLE PROPERTY OF  
SUNTRENDS INC. ANY  
REPRODUCTION IN PART OR AS A WHOLE  
WITHOUT THE WRITTEN PERMISSION OF  
SUNTRENDS INC. IS  
PROHIBITED

# Cabana Bench 8' - Surface Mount



**SIDE VIEW**

**PROPRIETARY AND CONFIDENTIAL**

THE INFORMATION CONTAINED IN THIS DRAWING IS THE SOLE PROPERTY OF SUNTRENDS INC. ANY REPRODUCTION IN PART OR AS A WHOLE WITHOUT THE WRITTEN PERMISSION OF SUNTRENDS INC. IS PROHIBITED.

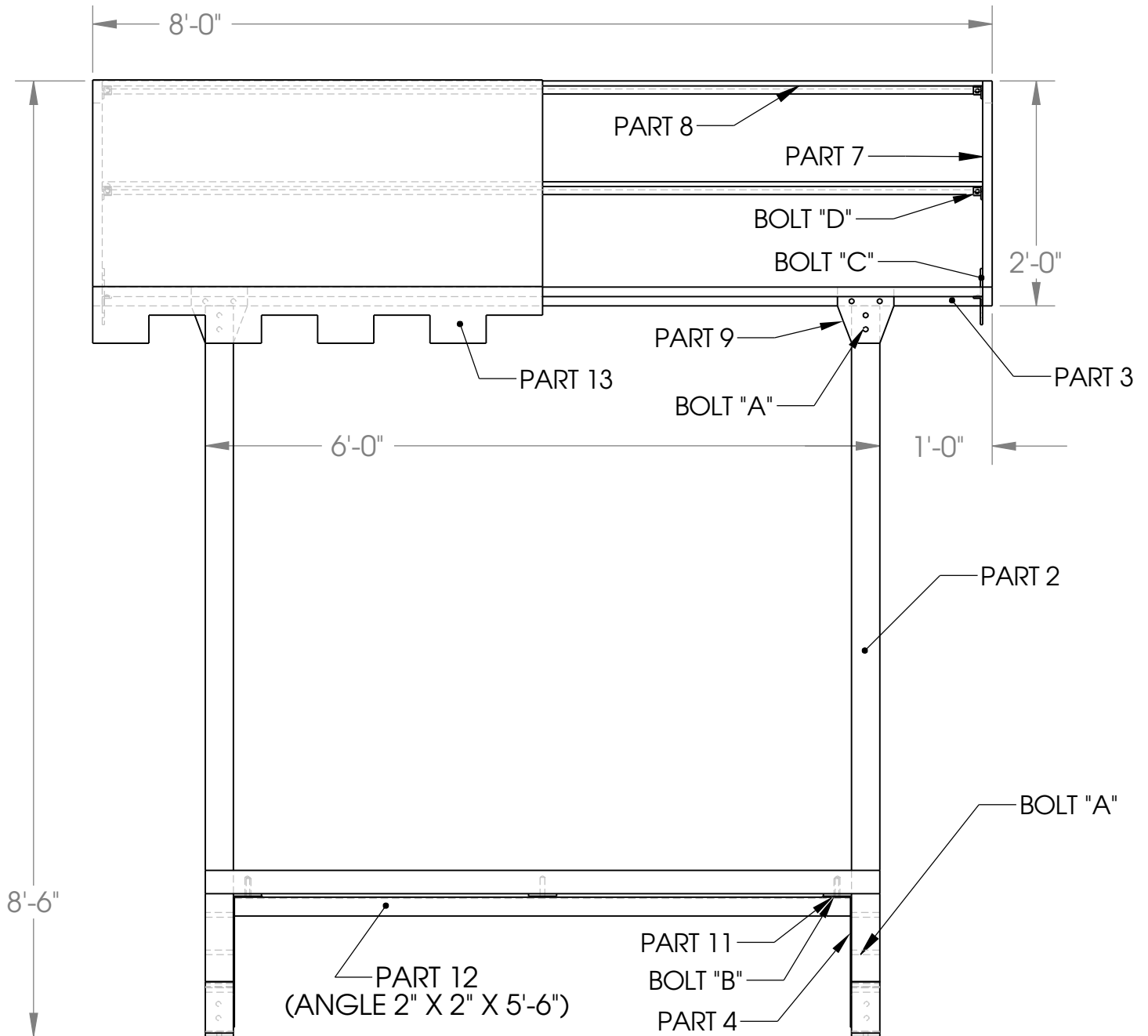
**SunTrends, Inc.**

P.O. BOX 101057  
DENVER, CO 80250  
303-744-2647

SCALE 1:14

SHEET 3 OF 5

# Cabana Bench 8' - Surface Mount



**FRONT VIEW**

**PROPRIETARY AND CONFIDENTIAL**

THE INFORMATION CONTAINED IN THIS DRAWING IS THE SOLE PROPERTY OF SUNTRENDS INC. ANY REPRODUCTION IN PART OR AS A WHOLE WITHOUT THE WRITTEN PERMISSION OF SUNTRENDS INC. IS PROHIBITED.

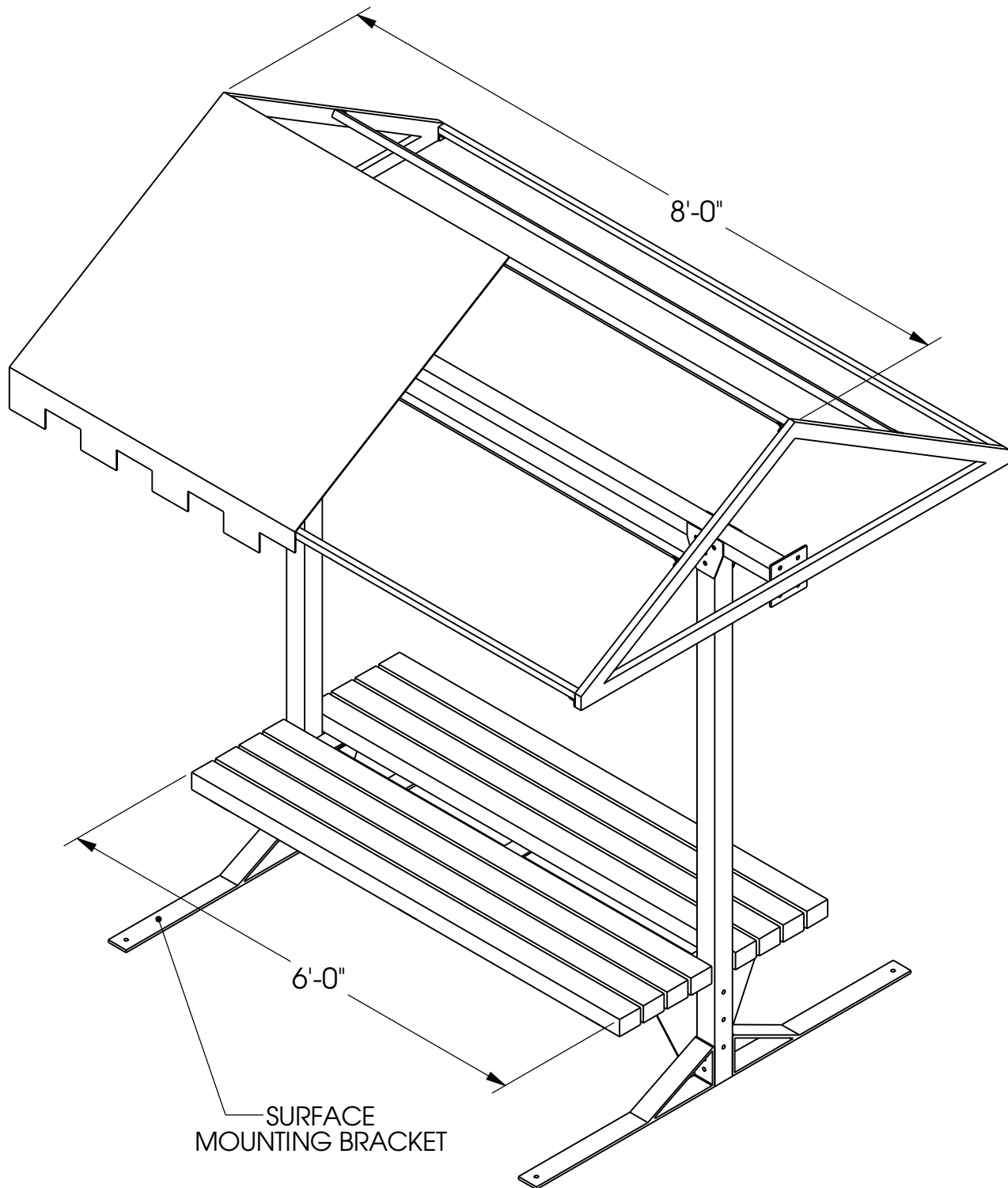
**SunTrends, Inc.**

P.O. BOX 101057  
DENVER, CO 80250  
303-744-2647

SCALE 1:16

SHEET 2 OF 5

# Cabana Bench 8' - Surface Mount



ISOMETRIC VIEW

**PROPRIETARY AND CONFIDENTIAL**

THE INFORMATION CONTAINED IN THIS DRAWING IS THE SOLE PROPERTY OF SUNTRENDS INC. ANY REPRODUCTION IN PART OR AS A WHOLE WITHOUT THE WRITTEN PERMISSION OF SUNTRENDS INC. IS PROHIBITED.

**SunTrends, Inc.**

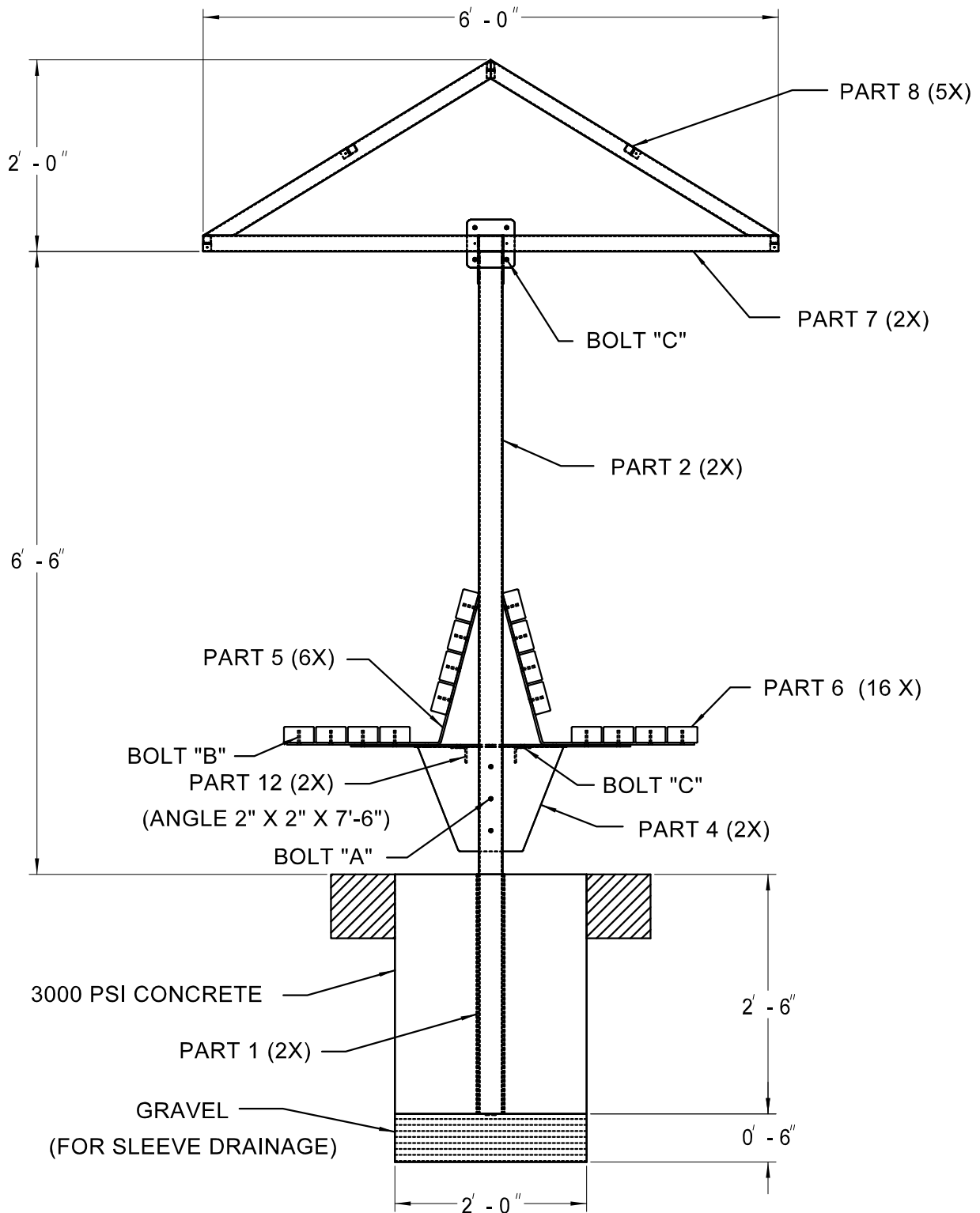
P.O. BOX 101057  
DENVER, CO 80250  
303-744-2647

SCALE 1:18

SHEET 1 OF 5

# Cabana Two Sided Bench With Backrest 8'

## - Direct Burial -



SIDE VIEW

SunTrends, Inc.

P.O. BOX 101057

DENVER, CO 80250

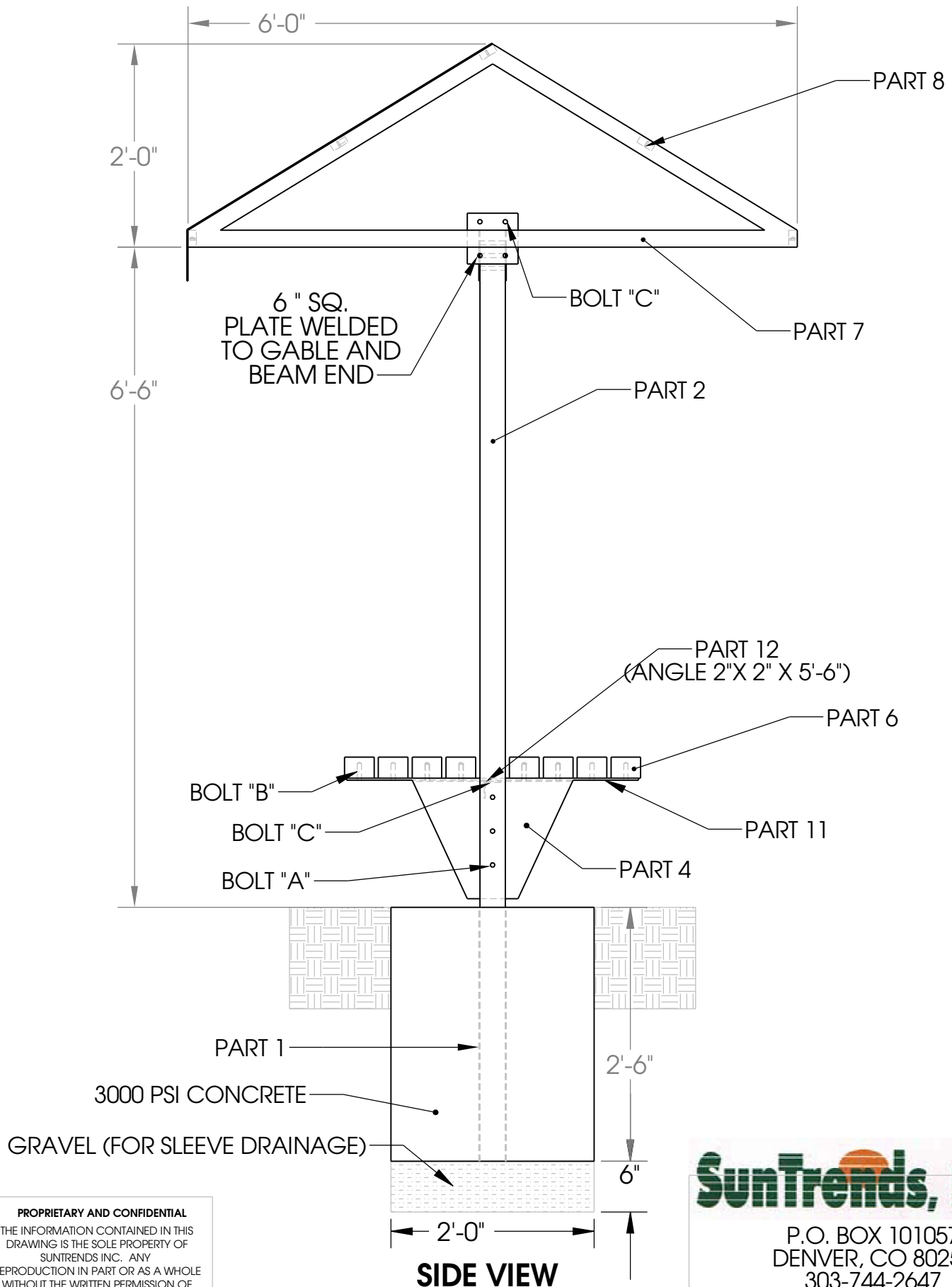
303-744-2647

SHEET 3 OF 5

PROPRIETARY AND CONFIDENTIAL

THE INFORMATION CONTAINED IN THIS  
DRAWING IS THE SOLE PROPERTY OF  
SUNTRENDS INC. ANY  
REPRODUCTION IN PART OR AS A WHOLE  
WITHOUT THE WRITTEN PERMISSION OF  
SUNTRENDS INC. IS  
PROHIBITED

# Cabana Bench 8' - Direct Burial



**PROPRIETARY AND CONFIDENTIAL**  
THE INFORMATION CONTAINED IN THIS  
DRAWING IS THE SOLE PROPERTY OF  
SUNTRENDS INC. ANY  
REPRODUCTION IN PART OR AS A WHOLE  
WITHOUT THE WRITTEN PERMISSION OF  
SUNTRENDS INC. IS  
PROHIBITED.

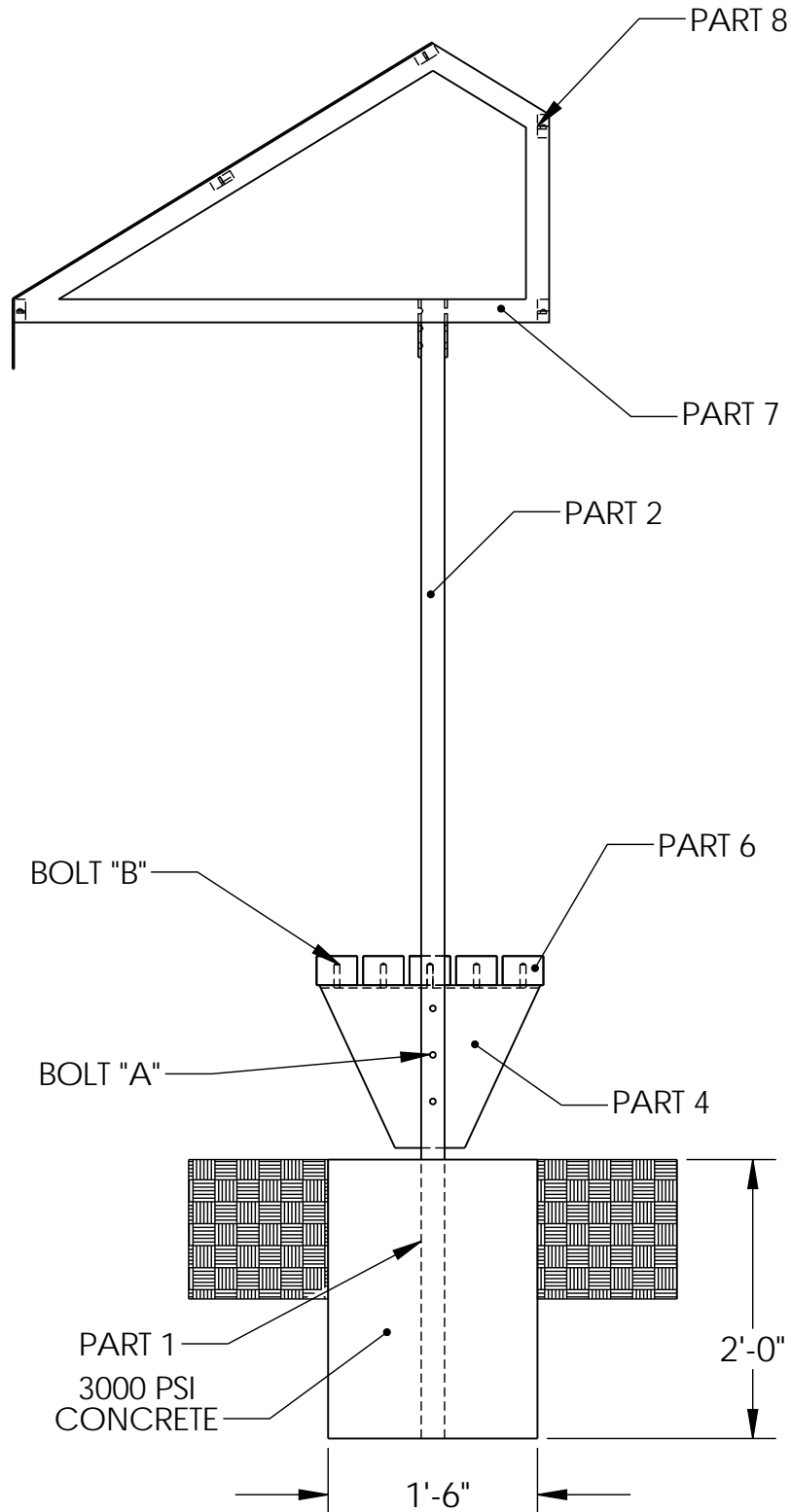
**SunTrends, Inc.**

P.O. BOX 101057  
DENVER, CO 80250  
303-744-2647

SCALE 1:18

SHEET 3 OF 5

# Cabana Bench Modified 8' - Direct Burial



**SIDE VIEW**

PROPRIETARY AND CONFIDENTIAL  
THE INFORMATION CONTAINED IN THIS  
DRAWING IS THE SOLE PROPERTY OF  
SUNTRENDS INC. ANY  
REPRODUCTION IN PART OR AS A WHOLE  
WITHOUT THE WRITTEN PERMISSION OF  
SUNTRENDS INC. IS  
PROHIBITED.

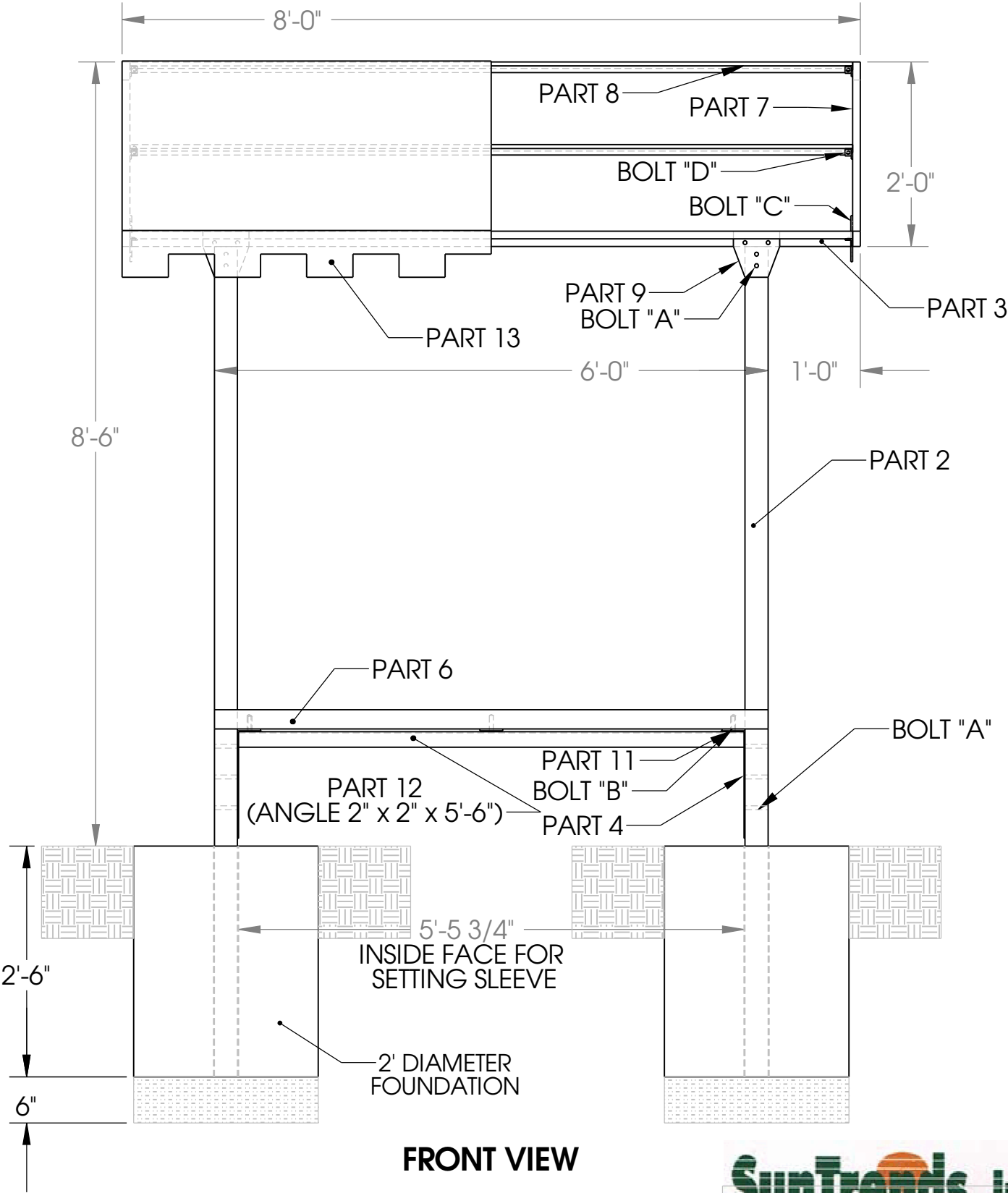
P.O. BOX 101057  
DENVER, CO 80250  
303-744-2647

SCALE 1:16

SHEET 3 OF 5



# Cabana Bench 8' - Direct Burial



**PROPRIETARY AND CONFIDENTIAL**

THE INFORMATION CONTAINED IN THIS  
DRAWING IS THE SOLE PROPERTY OF  
SUNTRENDS INC.. ANY  
REPRODUCTION IN PART OR AS A WHOLE  
WITHOUT THE WRITTEN PERMISSION OF  
SUNTRENDS INC. IS  
PROHIBITED.

**SunTrends, Inc.**

P.O. BOX 101057  
DENVER, CO 80250  
303-744-2647

SCALE 1:18

SHEET 2 OF 5



# Installation Guidelines

## Cabana Bench 8'-Surface Mount

**Tools Needed:** Ratchet set or wrenches

### **Step 1: Posts and Beam**

Attach surface mount legs (Part #10) to 3"x3" posts (Part #2) with bolts "A". Place beam (Part #3) on top of posts (Part #2) making sure bolt holes line up and secure with bolts "A" and column plates (Part #9)

### **Step 2: Seat Plates**

Attach the (2) seat plates (Part #4) to the inside face of the 3"x3" posts (Part #2) with bolts "A".

### **Step 3: Angle iron**

Attach (1) 2"x2" angle (Part #12) under seat plates (Part #4) with bolt "C". Note: Angle to be located between posts at center of seat plate

### **Step 4: Bench Straps and Durawood Slats**

Sandwich the (2) end bench straps (Part #11) between seat plates (Part #4) and Durawood slats (Part #6) and secure with lag bolts "B". The middle bench strap to be placed on top of angle (Part #12), attached with bolt "C", and secured to center of Durawood slats with lag bolts "B"

\*\*\*Alternate-Bench with Backrest: Substitute bench strap (Part #11) with BENT bench strap (Part #5) and follow steps above.

### **Step 5: Gable Ends**

Secure gable ends (Part #7) to each end of beam (Part #3) with bolts "C".

NOTE: 6"x6" plates to meet at beam end and center of gable end.

### **Step 6: Perlins**

Attach (5) perlins (Part #8) to gable ends with bolts "D".

### **Step 7: Fabric Canopy**

1. Unfold canvas (Part #13) and drape it over the canopy frame. (The grommetted laces are on the inside of the cover).
2. Pull the cover down over the corners making sure the canvas is square with the frame and wrinkles are pulled taut.
3. Starting at the center of the short sides (where the beam and gable meet) lace the rope through the grommets, working toward the other end. Pull the cover and rope tight as you work toward the other end. Tie off loose ends.

### **Step 8: Miscellaneous**

Use can of black spray (semi gloss) paint to touch up scratches from shipping or erection.

# Installation Guidelines

## Cabana Bench 8'-Direct Burial

**Tools Needed:** Ratchet set or wrenches, hand level, shovel, wheel barrow.

### **Step 1: Foundation Excavation**

Excavate holes on level ground for foundation of 2'-0" diameter by 3'-0" deep. Holes spaced at 5'9" to center of each hole (for either a Cabana Bench 8 or Cabana Bench 10). Place approximately 6" of gravel in holes to an elevation of 2'6" deep. (Gravel used to support posts at desired elevation while concrete is being poured and to drain post sleeves).

### **Step 2: Posts and Beam**

Slide 3"x3" sleeves (Part #1) on to posts (Part #2) and place beam (Part #3) on top of posts making sure bolt holes line up. Secure with bolts "A" and column plates (Part #9)

### **Step 3: Foundation Placement**

Set posts and beam on top of gravel base. Check the elevation to insure proper depth of posts. While plumbing posts vertically with a hand level, posts and beam need to be secured in place, using guy ropes or 2"x4" braces. Ropes need sufficient tautness to insure stability while pouring concrete. Concrete may then be poured, taking care not to move posts. Re-check the plumb after pouring concrete.

**NOTE:** Concrete needs 24 hours of curing time, prior to erecting rest of bench.

### **Step 4: Seat Plates**

Attach the (2) seat plates (Part #4) to the inside face of the 3"x3" posts (Part #2) with bolts "A".

### **Step 5: Angle iron**

Attach (1) 2"x2" angle (Part #12) under seat plates (Part #4) with bolt "C".

**Note:** Angle to be located between posts at center of seat plate

### **Step 6: Bench Straps and Durawood Slats**

Sandwich the (2) end bench straps (Part #11) between seat plates (Part #4) and Durawood slats (Part #6) and secure with lag bolts "B". The middle bench strap to be placed on top of angle (Part #12), attached with bolt "C", and secured to center of Durawood slats with lag bolts "B"

**\*\*\*Alternate-Bench with Backrest:** Substitute bench strap (Part #11) with BENT bench strap (Part #5) and follow steps above.

**Step 7: Gable Ends**

Secure gable ends (Part #7) to each end of beam (Part #3) with bolts “C”.

**NOTE:** 6”x6” plates to meet at beam end and center of gable end.

**Step 8: Perlins**

Attach (5) perlins (Part #8) to gable ends with bolts “D”.

**Step 9: Fabric Canopy**

1. Unfold canvas (Part #13) and drape it over the canopy frame. (The grommetted laces are on the inside of the cover).
2. Pull the cover down over the corners making sure the canvas is square with the frame and wrinkles are pulled taut.
3. Starting at the center of the short sides (where the beam and gable meet) lace the rope through the grommets, working toward the other end. Pull the cover and rope tight as you work toward the other end. Tie off loose ends.

**Step 10: Miscellaneous**

Use can of black spray (semi gloss) paint to touch up scratches from shipping or erection.

## PART AND BOLT SCHEDULE - CABANA 8" SURFACE MOUNT

NUMBER	QUANTITY	DESCRIPTION
2	2	3" SQ. STEEL TUBE COLUMN
3	1	2" X 3" STEEL TUBE BEAM
4	2	STEEL SEAT PLATE
5	3	BENT STEEL BENCH STRAP (OPTION)
6	8	3" X 4" NOMINAL DURAWOOD PLASTIC SLATS
7	2	GABLE END FRAME
8	5	1" SQ. STEEL TUBE PURLINS
9	4	6" X 6" COLUMN PLATE
10	4	STEEL SURFACE MOUNT LEGS
11	3	STEEL BENCH STRAP (3" WIDE X 34" LONG)
12	1	2" X 2" ANGLE
13	1	CANVAS CANOPY
"A"	18	3/8" X 4" HEX HEAD BOLT W/ NUT & WASHER
"B"	24	3/8" X 2" HEX HEAD LAG SCREW W/ WASHER
"C"	11	3/8" X 1" HEX HEAD BOLT W/ NUT & WASHER
"D"	10	1/4" X 1.1/2" HEX HEAD BOLT W/ NUT & WASHER
"F"	4	1/2" X 3.1/2" EXPANSION BOLT (OPTION) NOT INCL.

## PART AND BOLT SCHEDULE - CABANA 8' DIRECT BURIAL

NUMBER	QUANTITY	DESCRIPTION
1	2	3 1/2" SQ. STEEL POST SLEEVE
2	2	3" SQ. STEEL TUBE COLUMN
3	1	2" X 3" STEEL TUBE BEAM
4	2	STEEL SEAT PLATE
5	3	BENT STEEL BENCH STRAP (OPTION)
6	8	3" X 4" NOMINAL DURAWOOD PLASTIC SLATS
7	2	GABLE END FRAME
8	5	1" SQ. STEEL TUBE PURLINS
9	4	6" X 6" COLUMN PLATE
11	3	BENCH STRAP (3" WIDE X 34" LONG)
12	1	2" X 2" ANGLE
13	1	FABRIC CANOPY
"A"	14	3/8" X 4" HEX HEAD BOLT W/ NUT & WASHER
"B"	24	3/8" X 2" HEX HEAD LAG SCREW W/ WASHER
"C"	11	3/8" X 1" HEX HEAD BOLT W/ NUT & WASHER
"D"	10	1/4" X 1.1/2" HEX HEAD BOLT W/ NUT & WASHER
"F"	4	1/2" X 3.1/2" EXPANSION BOLT (OPTION) NOT INCL.