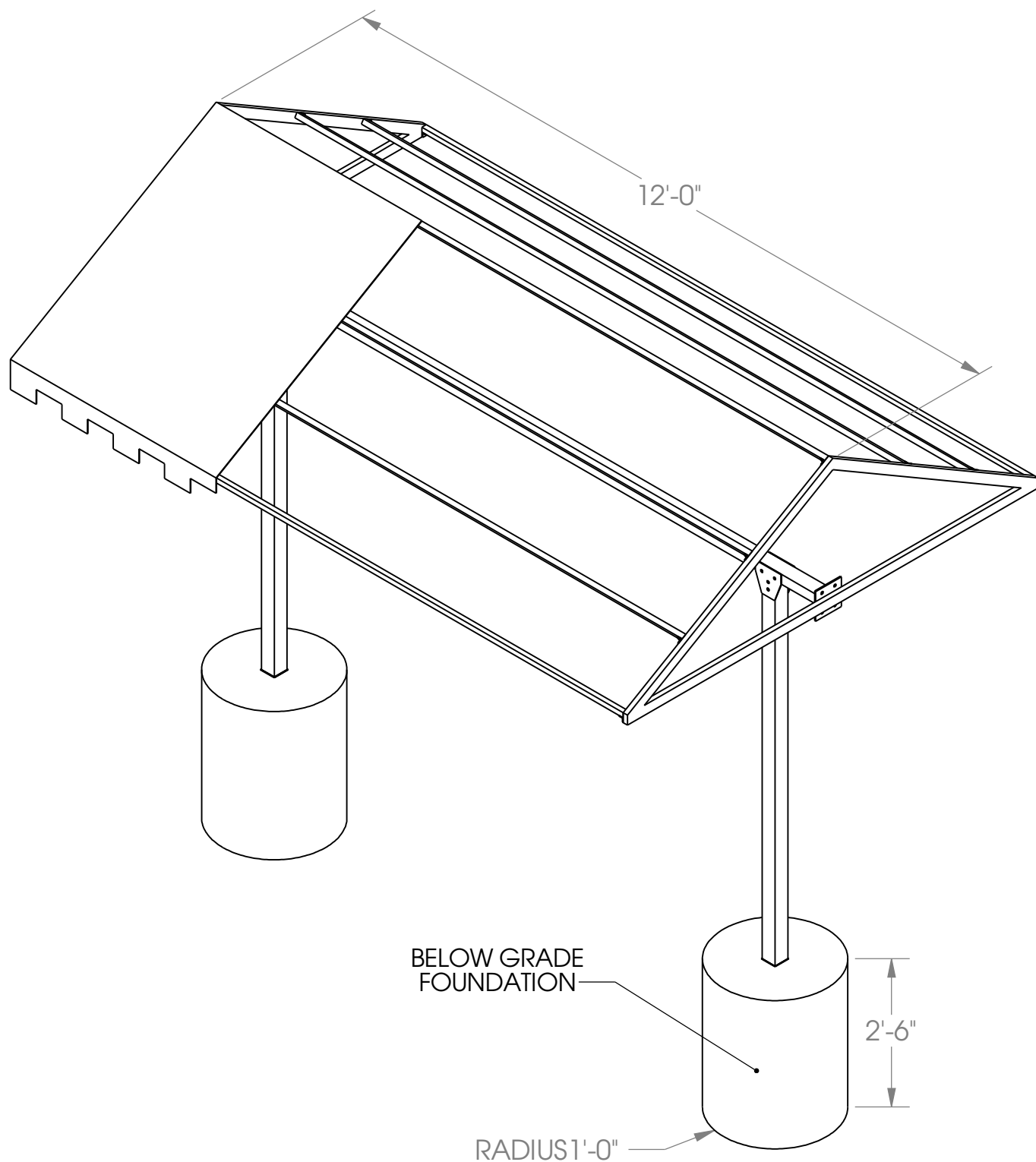


Cabana Canopy 12' - Direct Burial



ISOMETRIC VIEW

PROPRIETARY AND CONFIDENTIAL

THE INFORMATION CONTAINED IN THIS DRAWING IS THE SOLE PROPERTY OF SUNTRENDS INC. ANY REPRODUCTION IN PART OR AS A WHOLE WITHOUT THE WRITTEN PERMISSION OF SUNTRENDS INC. IS PROHIBITED.

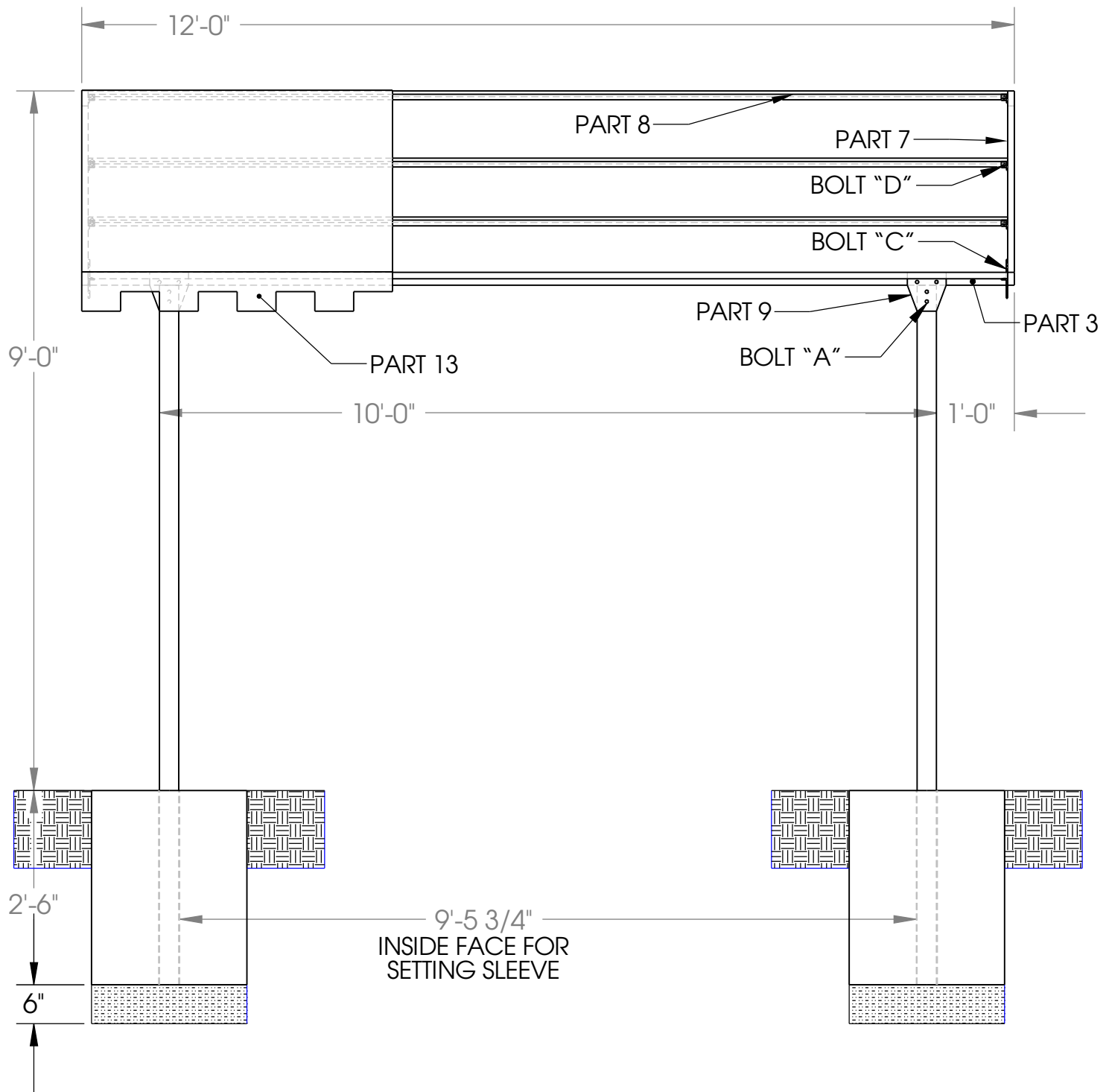
SunTrends, Inc.

P.O. BOX 101057
DENVER, CO 80250
303-744-2647

SCALE 1:24

SHEET 1 OF 5

Cabana Canopy 12' - Direct Burial



FRONT VIEW

PROPRIETARY AND CONFIDENTIAL

THE INFORMATION CONTAINED IN THIS
DRAWING IS THE SOLE PROPERTY OF
SUNTRENDS INC. ANY
REPRODUCTION IN PART OR AS A WHOLE
WITHOUT THE WRITTEN PERMISSION OF
SUNTRENDS INC. IS
PROHIBITED.

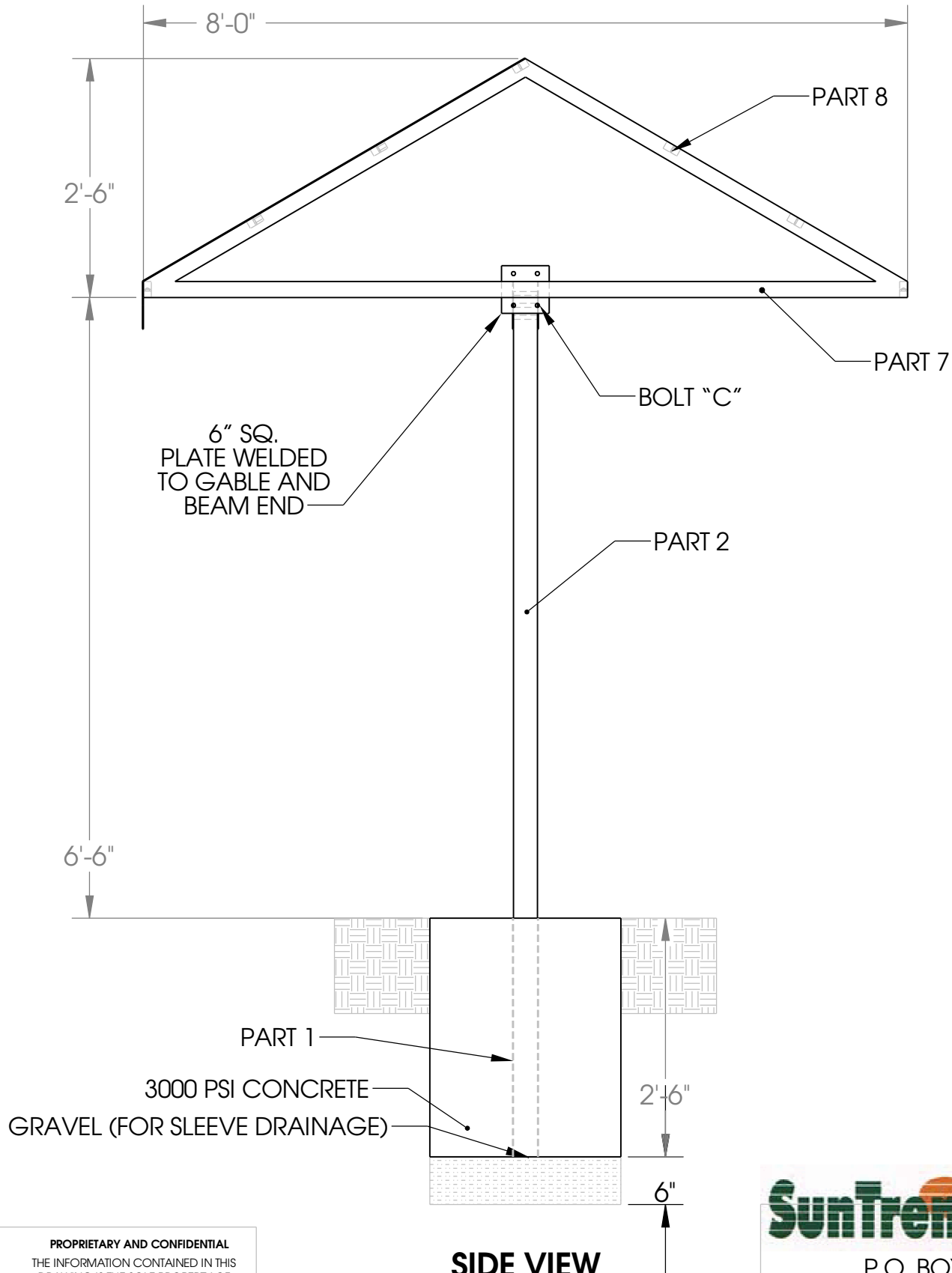
SunTrends, Inc.

P.O. BOX 101057
DENVER, CO 80250
303-744-2647

SCALE 1:22

SHEET 2 OF 5

Cabana Canopy 12' - Direct Burial



PROPRIETARY AND CONFIDENTIAL
THE INFORMATION CONTAINED IN THIS
DRAWING IS THE SOLE PROPERTY OF
SUNTRENDS INC. ANY
REPRODUCTION IN PART OR AS A WHOLE
WITHOUT THE WRITTEN PERMISSION OF
SUNTRENDS INC. IS
PROHIBITED.

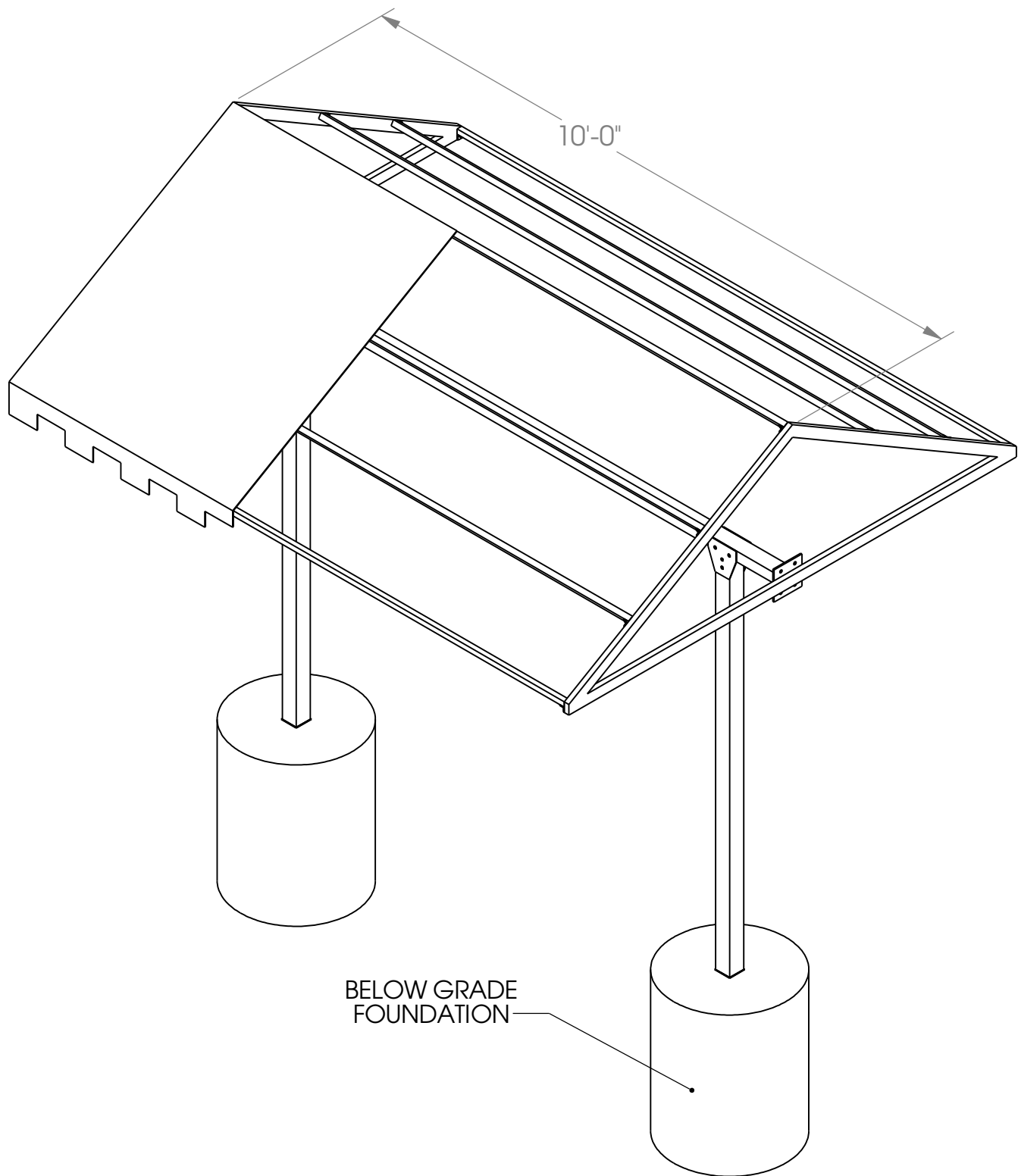
SunTrends, Inc.

P.O. BOX 101057
DENVER, CO 80250
303-744-2647

SCALE 1:18

SHEET 3 OF 5

Cabana Canopy 10' - Direct Burial



BELOW GRADE
FOUNDATION

ISOMETRIC VIEW

PROPRIETARY AND CONFIDENTIAL
THE INFORMATION CONTAINED IN THIS
DRAWING IS THE SOLE PROPERTY OF
SUNTRENDS INC. ANY
REPRODUCTION IN PART OR AS A WHOLE
WITHOUT THE WRITTEN PERMISSION OF
SUNTRENDS INC. IS
PROHIBITED.

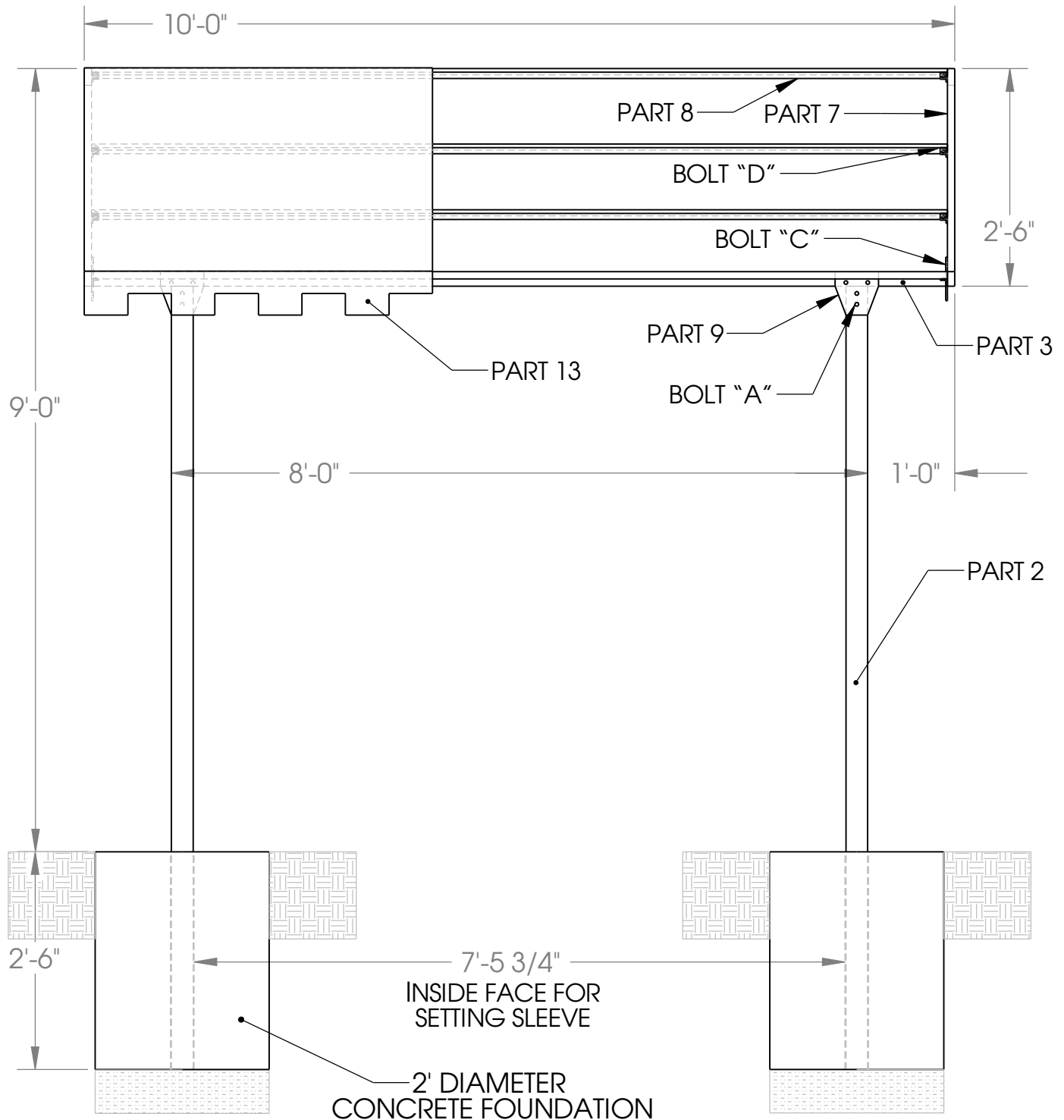
SunTrends, Inc.

P.O. BOX 101057
DENVER, CO 80250
303-744-2647

SCALE 1:22

SHEET 1 OF 4

Cabana Canopy 10' - Direct Burial



FRONT VIEW

PROPRIETARY AND CONFIDENTIAL

THE INFORMATION CONTAINED IN THIS DRAWING IS THE SOLE PROPERTY OF SUNTRENDS INC. ANY REPRODUCTION IN PART OR AS A WHOLE WITHOUT THE WRITTEN PERMISSION OF SUNTRENDS INC. IS PROHIBITED.

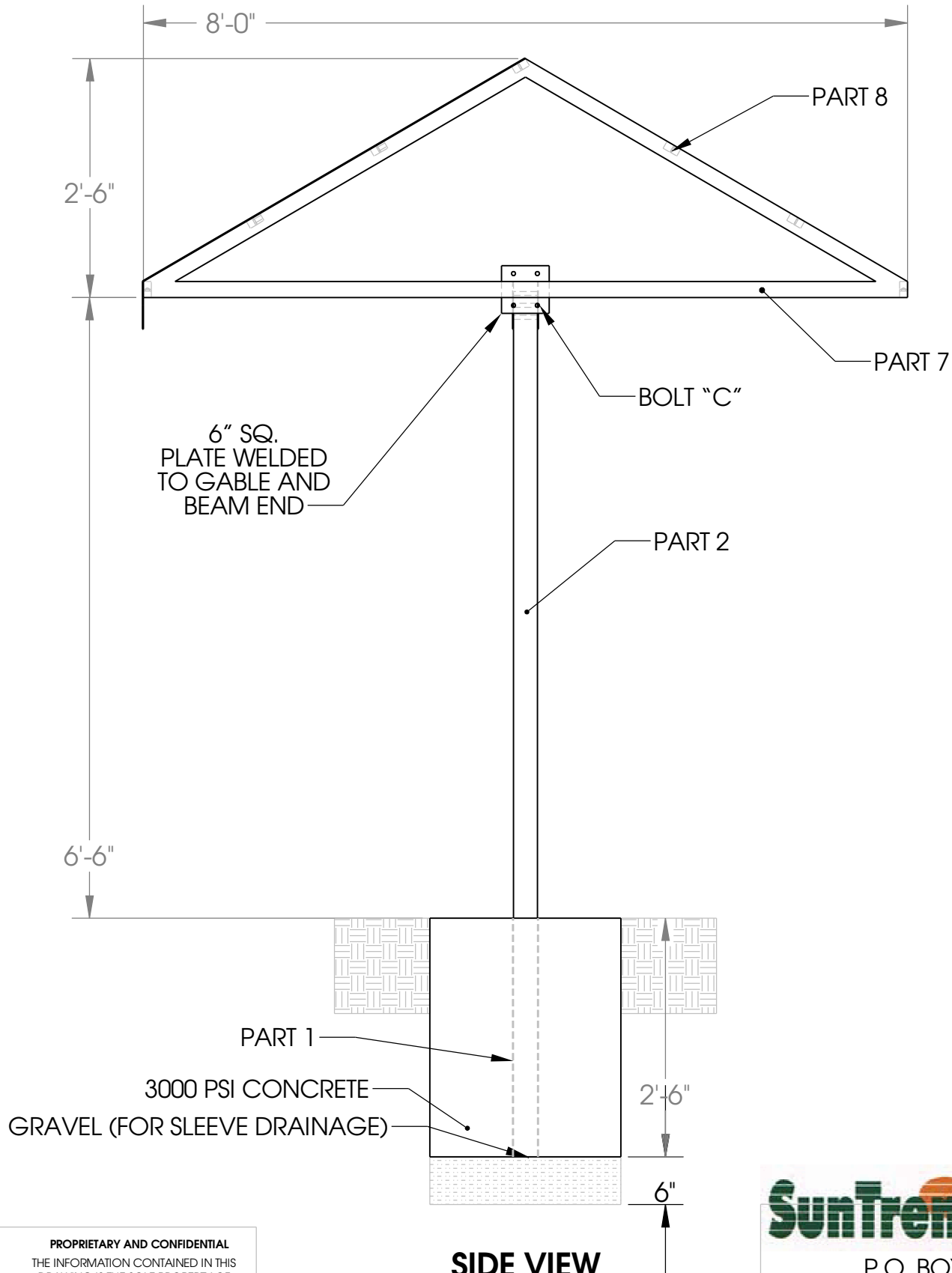
SunTrends, Inc.

P.O. BOX 101057
DENVER, CO 80250
303-744-2647

SCALE 1:20

SHEET 2 OF 4

Cabana Canopy 10' - Direct Burial



PROPRIETARY AND CONFIDENTIAL
 THE INFORMATION CONTAINED IN THIS
 DRAWING IS THE SOLE PROPERTY OF
 SUNTRENDS INC. ANY
 REPRODUCTION IN PART OR AS A WHOLE
 WITHOUT THE WRITTEN PERMISSION OF
 SUNTRENDS INC. IS
 PROHIBITED.

SunTrends, Inc.

P.O. BOX 101057
 DENVER, CO 80250
 303-744-2647

SCALE 1:18

SHEET 3 OF 4

Installation Guidelines

Cabana Canopy 10'

Tools Needed: Ratchet set or wrenches, hand level, shovels, wheel barrow.

Step 1: Foundation Excavation

Excavate holes on level ground for foundation of 2'-0" diameter by 3'-0" deep. Holes spaced at 7'9" to center of each hole. Place approximately 6" of gravel in holes to an elevation of 2'6" deep. (Gravel used to support posts at desired elevation while concrete is being poured and to drain post sleeves.

Step 2: Posts and Beam

Slide 3"x3" sleeves (Part #1) on to posts (Part #2) and place beam (Part #3) on top of posts making sure bolt holes line up. Secure with bolts "A" and column plates (Part #9)

Step 3: Foundation Placement

Set posts and beam on top of gravel base. Check the elevation to insure proper depth of posts. While plumbing posts vertically with a hand level, posts and beam need to be secured in place, using guy ropes or 2"x4" braces. Ropes need sufficient tautness to insure stability while pouring concrete. Concrete may then be poured, taking care not to move posts. Re-check the plumb after pouring concrete.

NOTE: Concrete needs 24 hours of curing time, prior to erecting rest of bench.

Step 7: Gable Ends

Secure gable ends (Part #7) to each end of beam (Part #3) with bolts "C".

NOTE: 6"x6" plates to meet at beam end and center of gable end.

Step 8: Perlins

Attach (7) perlins (Part #8) to gable ends (Part #7) with bolts "D".

Step 9: Fabric Canopy

1. Unfold canvas (Part #13) and drape it over the canopy frame. (The grommetted laces are on the inside of the cover).
2. Pull the cover down over the corners making sure the canvas is square with the frame and wrinkles are pulled taut.
3. Starting at the center of the short sides (where the beam and gable meet) lace the rope through the grommets, working toward the other end. Pull the cover and rope tight as you work toward the other end. Tie off loose ends.

Step 10: Miscellaneous

Use can of black spray (semi gloss) paint to touch up scratches from shipping or erection.

Installation Guidelines

Cabana Canopy 12'

Tools Needed: Ratchet set or wrenches, hand level, shovels, wheel barrow.

Step 1: Foundation Excavation

Excavate holes on level ground for foundation of 2'-0" diameter by 3'-0" deep. Holes spaced at 9'9" to center of each hole. Place approximately 6" of gravel in holes to an elevation of 2'6" deep. (Gravel used to support posts at desired elevation while concrete is being poured and to drain post sleeves.

Step 2: Posts and Beam

Slide 3"x3" sleeves (Part #1) on to posts (Part #2) and place beam (Part #3) on top of posts making sure bolt holes line up. Secure with bolts "A" and column plates (Part #9)

Step 3: Foundation Placement

Set posts and beam on top of gravel base. Check the elevation to insure proper depth of posts. While plumbing posts vertically with a hand level, posts and beam need to be secured in place, using guy ropes or 2"x4" braces. Ropes need sufficient tautness to insure stability while pouring concrete. Concrete may then be poured, taking care not to move posts. Re-check the plumb after pouring concrete.

NOTE: Concrete needs 24 hours of curing time, prior to erecting rest of bench.

Step 7: Gable Ends

Secure gable ends (Part #7) to each end of beam (Part #3) with bolts "C".

NOTE: 6"x6" plates to meet at beam end and center of gable end.

Step 8: Perlins

Attach (7) perlins (Part #8) to gable ends (Part #7) with bolts "D".

Step 9: Fabric Canopy

1. Unfold canvas (Part #13) and drape it over the canopy frame. (The grommetted laces are on the inside of the cover).
2. Pull the cover down over the corners making sure the canvas is square with the frame and wrinkles are pulled taut.
3. Starting at the center of the short sides (where the beam and gable meet) lace the rope through the grommets, working toward the other end. Pull the cover and rope tight as you work toward the other end. Tie off loose ends.

Step 10: Miscellaneous

Use can of black spray (semi gloss) paint to touch up scratches from shipping or erection.

PART AND BOLT SCHEDULE - CABANA CANOPY 10'-DIRECT BURIAL

NUMBER	QUANTITY	DESCRIPTION
1	2	3 1/2" SQ. STEEL POST SLEEVE
2	2	3" SQ. STEEL TUBE COLUMN
3	1	2" X 3" STEEL TUBE BEAM
7	2	GABLE END FRAME
8	7	1" SQ. STEEL TUBE PURLINS
9	4	6" X 6" COLUMN PLATE
13	1	CANVAS CANOPY
"A"	8	3/8" X 4" HEX HEAD BOLT W/ NUT & WASHER
"C"	8	3/8" X 1" HEX HEAD BOLT W/ NUT & WASHER
"D"	14	1/4" X 1.1/2" HEX HEAD BOLT W/ NUT & WASHER

PART AND BOLT SCHEDULE - CABANA CANOPY12'-DIRECT BURIAL

NUMBER	QUANTITY	DESCRIPTION
1	2	3 1/2" SQ. STEEL POST SLEEVE
2	2	3" SQ. STEEL TUBE COLUMN
3	1	2" X 3" STEEL TUBE BEAM
7	2	GABLE END FRAME
8	7	1" SQ. STEEL TUBE PURLINS
9	4	6" X 6" COLUMN PLATE
13	1	CANVAS CANOPY
"A"	8	3/8" X 4" HEX HEAD BOLT W/ NUT & WASHER
"C"	8	3/8" X 1" HEX HEAD BOLT W/ NUT & WASHER
"D"	14	1/4" X 1.1/2" HEX HEAD BOLT W/ NUT & WASHER