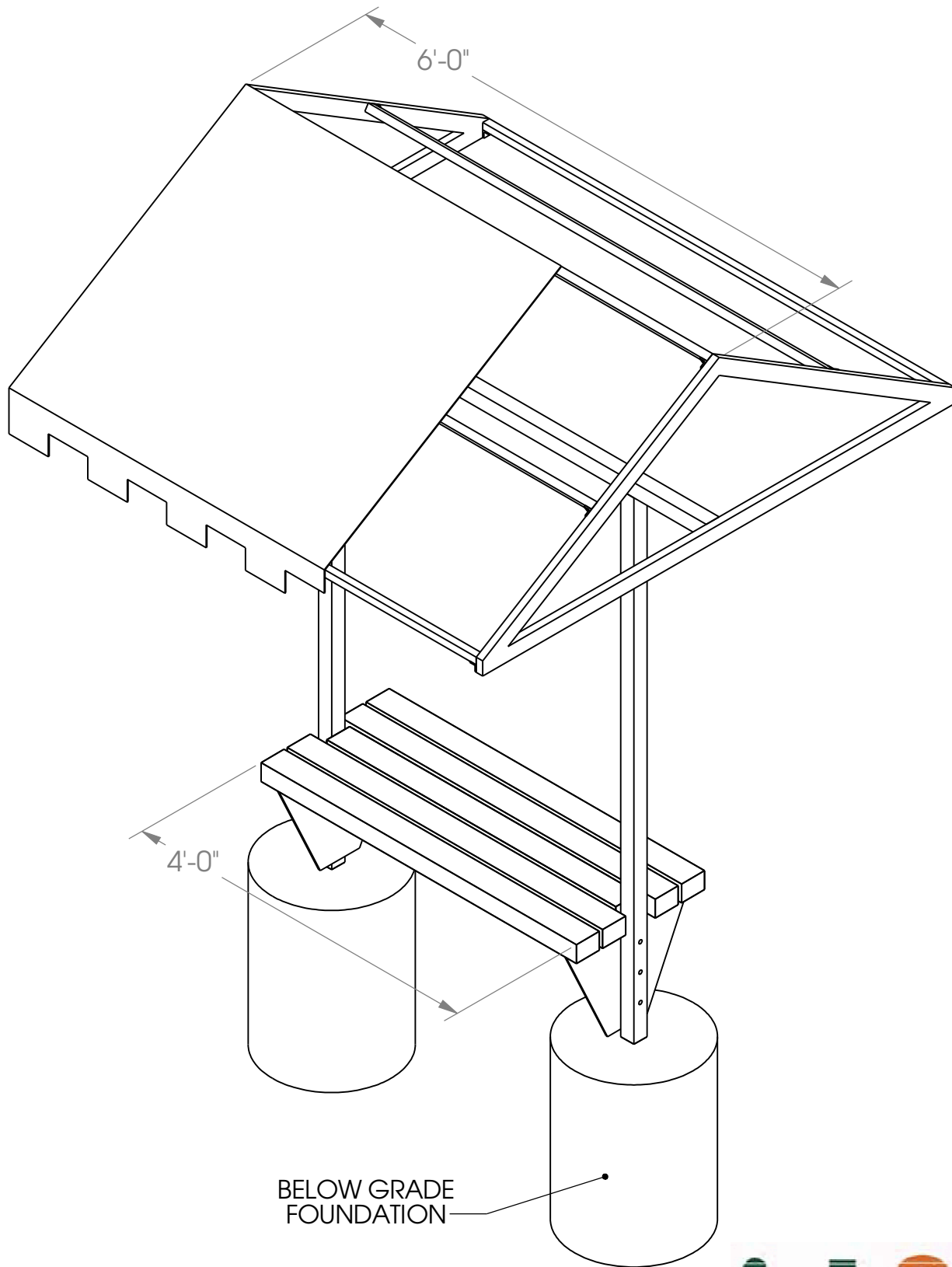


# Cabana Bench 6' - Direct Burial



**ISOMETRIC VIEW**

**PROPRIETARY AND CONFIDENTIAL**  
THE INFORMATION CONTAINED IN THIS  
DRAWING IS THE SOLE PROPERTY OF  
SUNTRENDS INC. ANY  
REPRODUCTION IN PART OR AS A WHOLE  
WITHOUT THE WRITTEN PERMISSION OF  
SUNTRENDS INC. IS  
PROHIBITED.

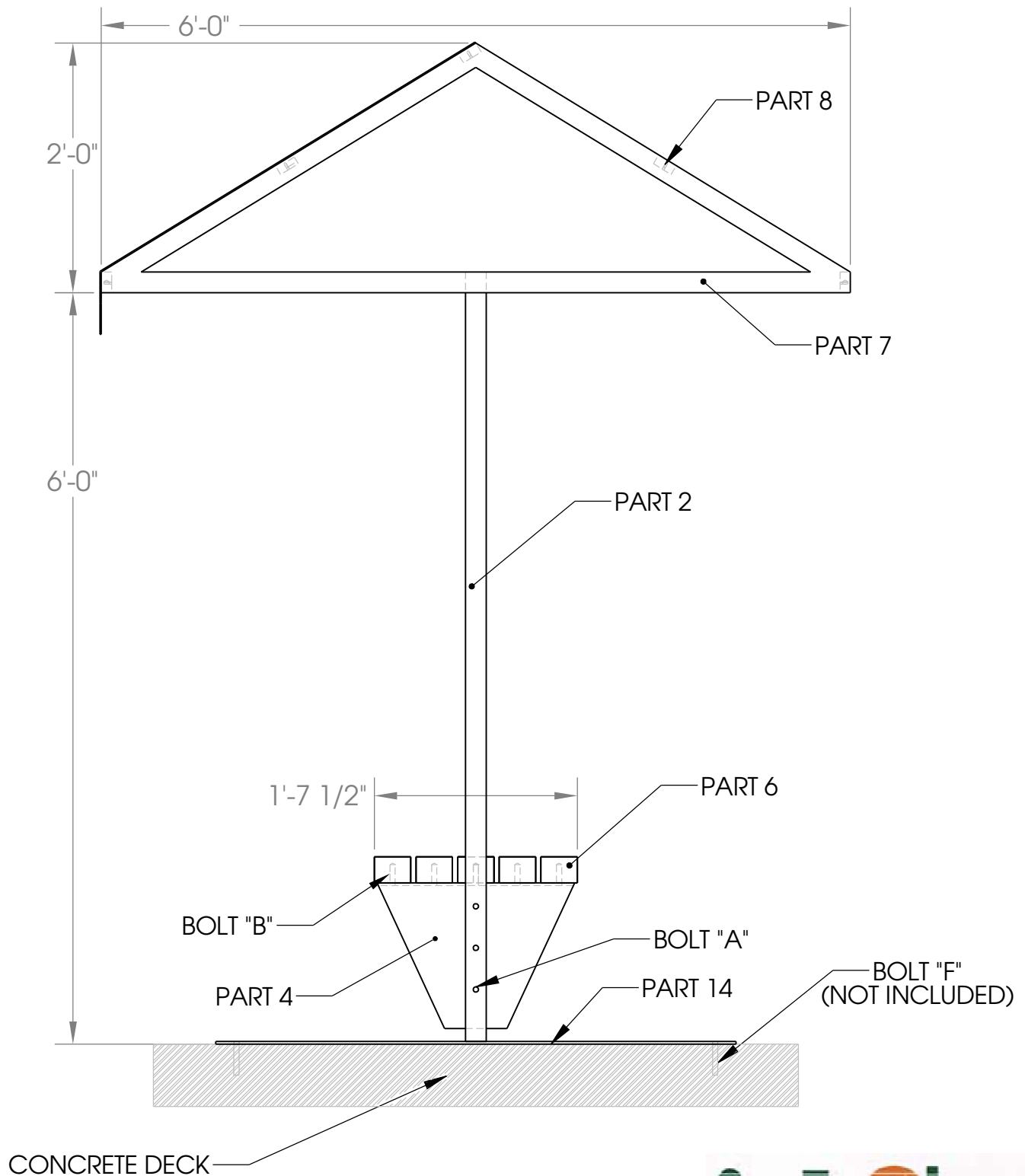
**SunTrends, Inc.**

P.O. BOX 101057  
DENVER, CO 80250  
303-744-2647

SCALE 1:16

SHEET 1 OF 5

## Cabana Bench 6' - Surface Mount



## SIDE VIEW

**PROPRIETARY AND CONFIDENTIAL**  
THE INFORMATION CONTAINED IN THIS  
DRAWING IS THE SOLE PROPERTY OF  
SUNTRENDS INC. ANY  
REPRODUCTION IN PART OR AS A WHOLE  
WITHOUT THE WRITTEN PERMISSION OF  
SUNTRENDS INC. IS  
PROHIBITED.

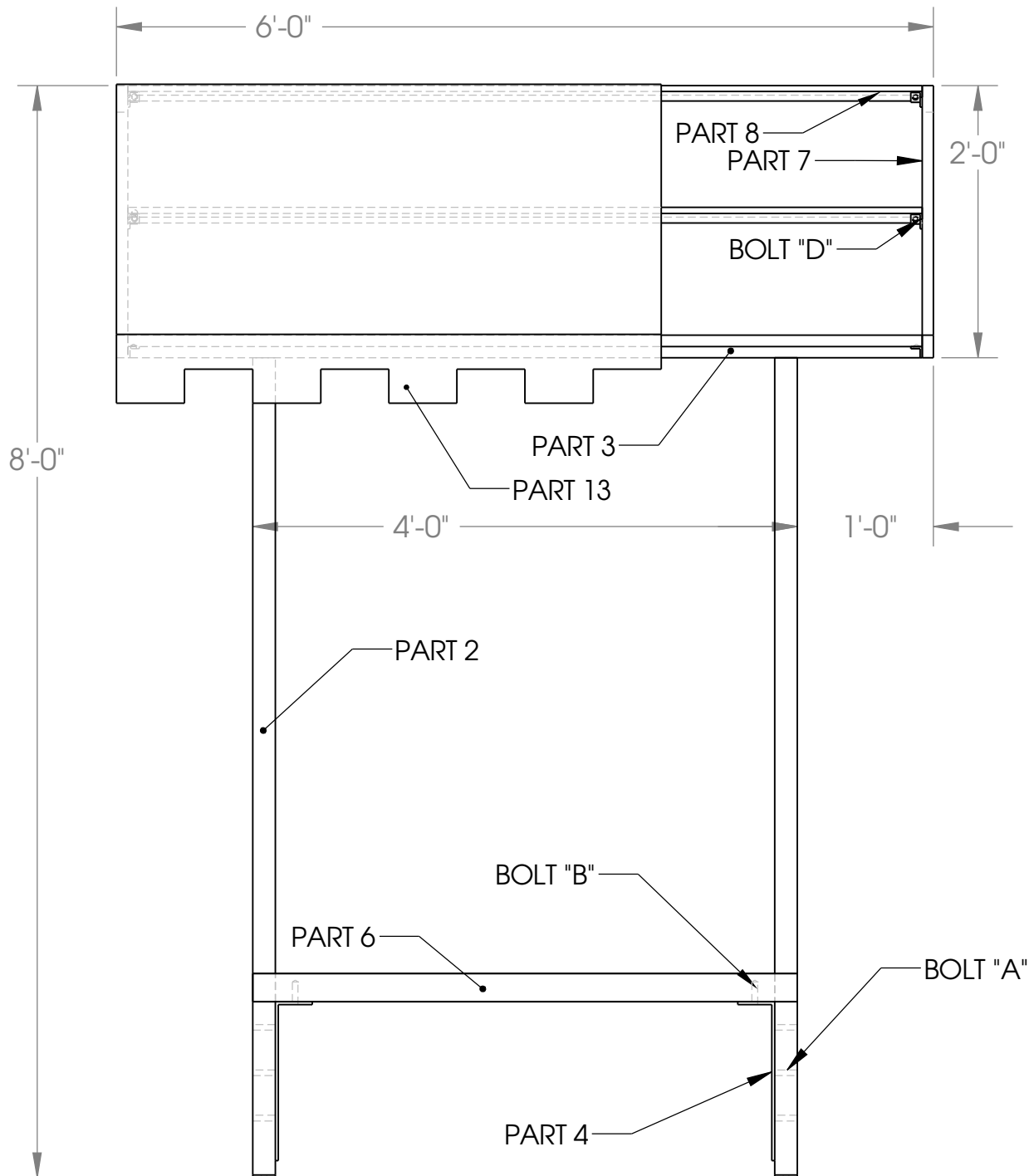
**SunTrends, Inc.**

P.O. BOX 101057  
DENVER, CO 80250  
303-744-2647

SCALE 1:14

SHEET 3 OF 5

# Cabana Bench 6' - Surface Mount



FRONT VIEW

**PROPRIETARY AND CONFIDENTIAL**

THE INFORMATION CONTAINED IN THIS DRAWING IS THE SOLE PROPERTY OF SUNTRENDS INC. ANY REPRODUCTION IN PART OR AS A WHOLE WITHOUT THE WRITTEN PERMISSION OF SUNTRENDS INC. IS PROHIBITED.

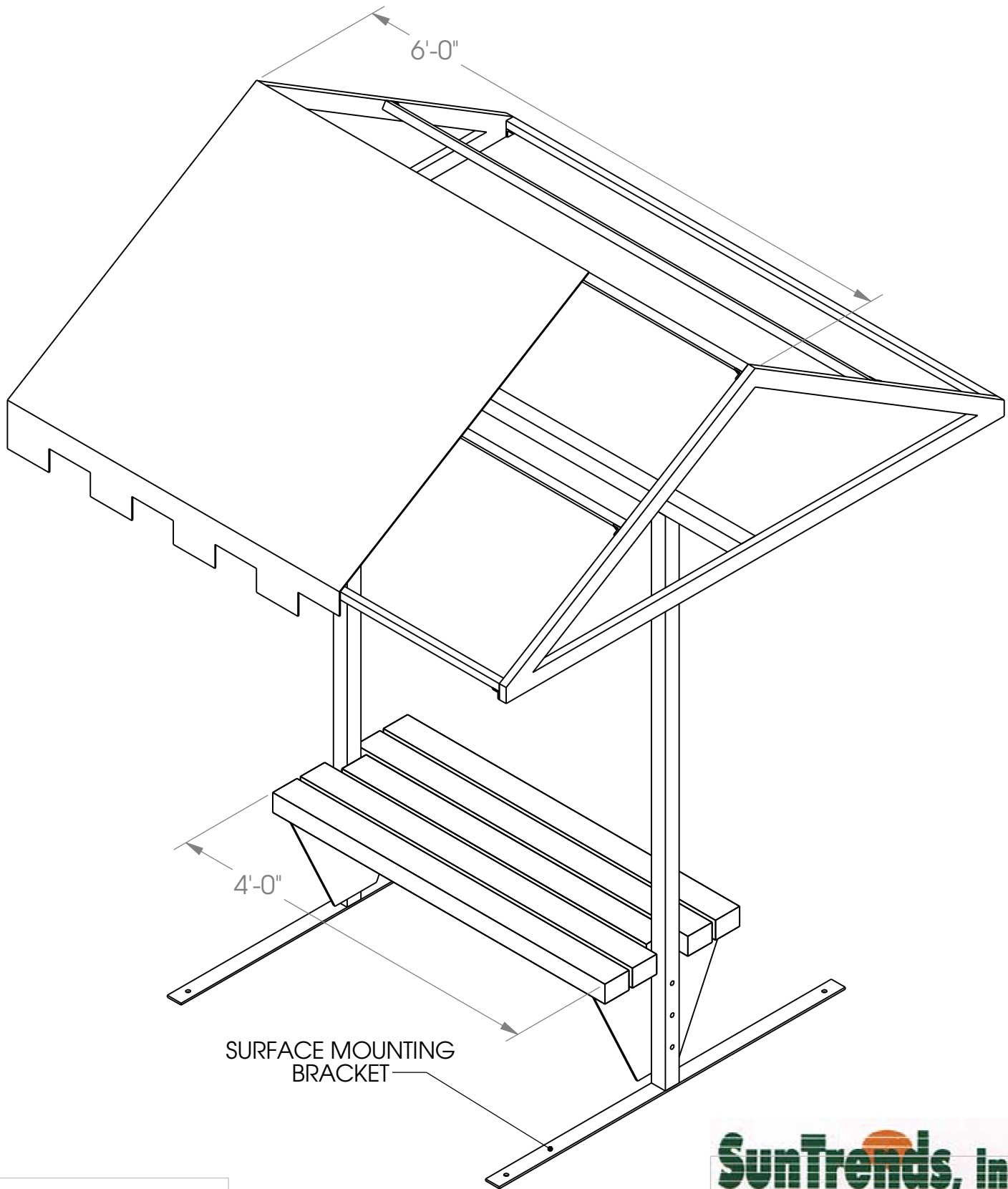
**SunTrends, Inc.**

P.O. BOX 101057  
DENVER, CO 80250  
303-744-2647

SCALE 1:14

SHEET 2 OF 5

# Cabana Bench 6' - Surface Mount



## PROPRIETARY AND CONFIDENTIAL

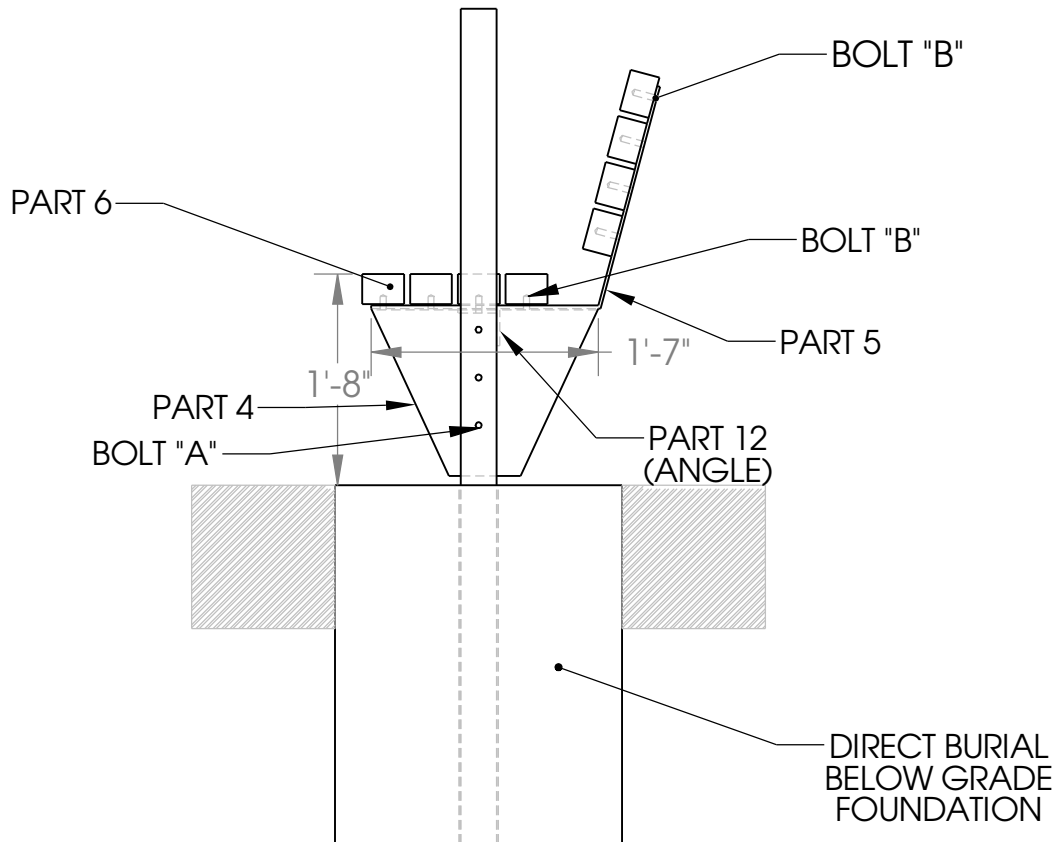
THE INFORMATION CONTAINED IN THIS DRAWING IS THE SOLE PROPERTY OF SUNTRENDS INC. ANY REPRODUCTION IN PART OR AS A WHOLE WITHOUT THE WRITTEN PERMISSION OF SUNTRENDS INC. IS PROHIBITED.

**SunTrends, Inc.**

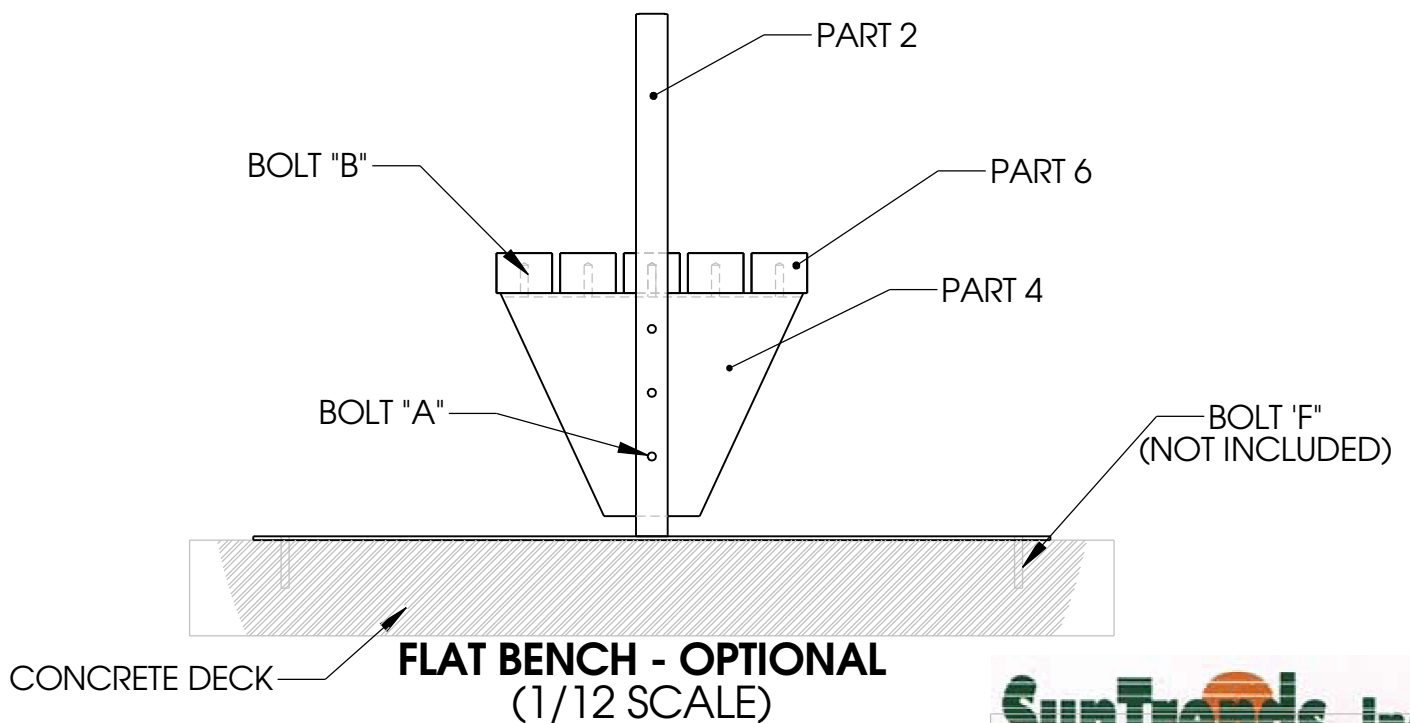
P.O. BOX 101057  
DENVER, CO 80250  
303-744-2647

SCALE 1:14

SHEET 1 OF 5



**BACKREST BENCH - OPTIONAL**  
(1/16 SCALE)

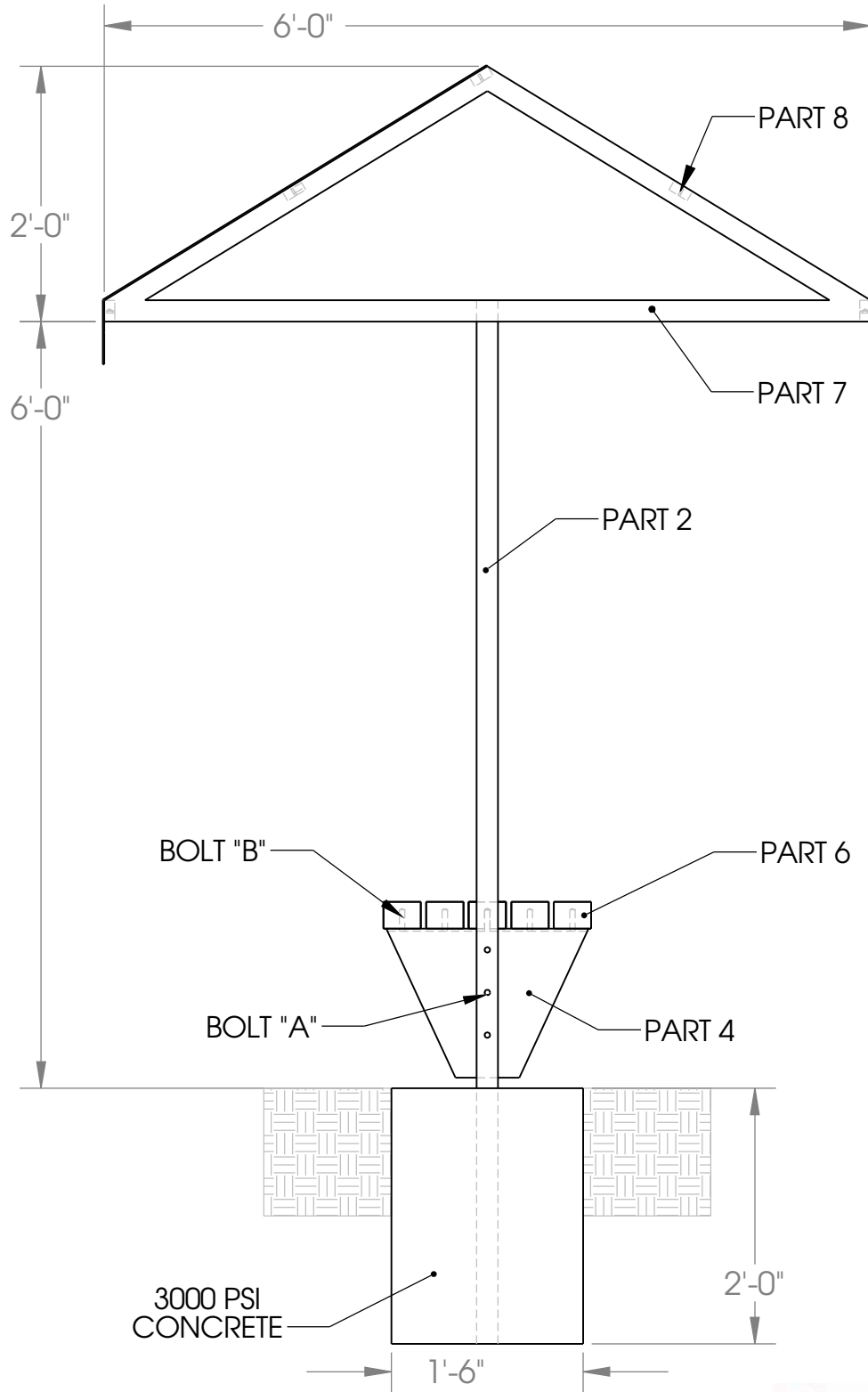


**FLAT BENCH - OPTIONAL**  
(1/12 SCALE)

**SunTrends, Inc.**

P.O. BOX 101057  
DENVER, CO 80250  
303-744-2647

# Cabana Bench 6' - Direct Burial



**SIDE VIEW**

**PROPRIETARY AND CONFIDENTIAL**  
THE INFORMATION CONTAINED IN THIS  
DRAWING IS THE SOLE PROPERTY OF  
SUNTRENDS INC. ANY  
REPRODUCTION IN PART OR AS A WHOLE  
WITHOUT THE WRITTEN PERMISSION OF  
SUNTRENDS INC. IS  
PROHIBITED.

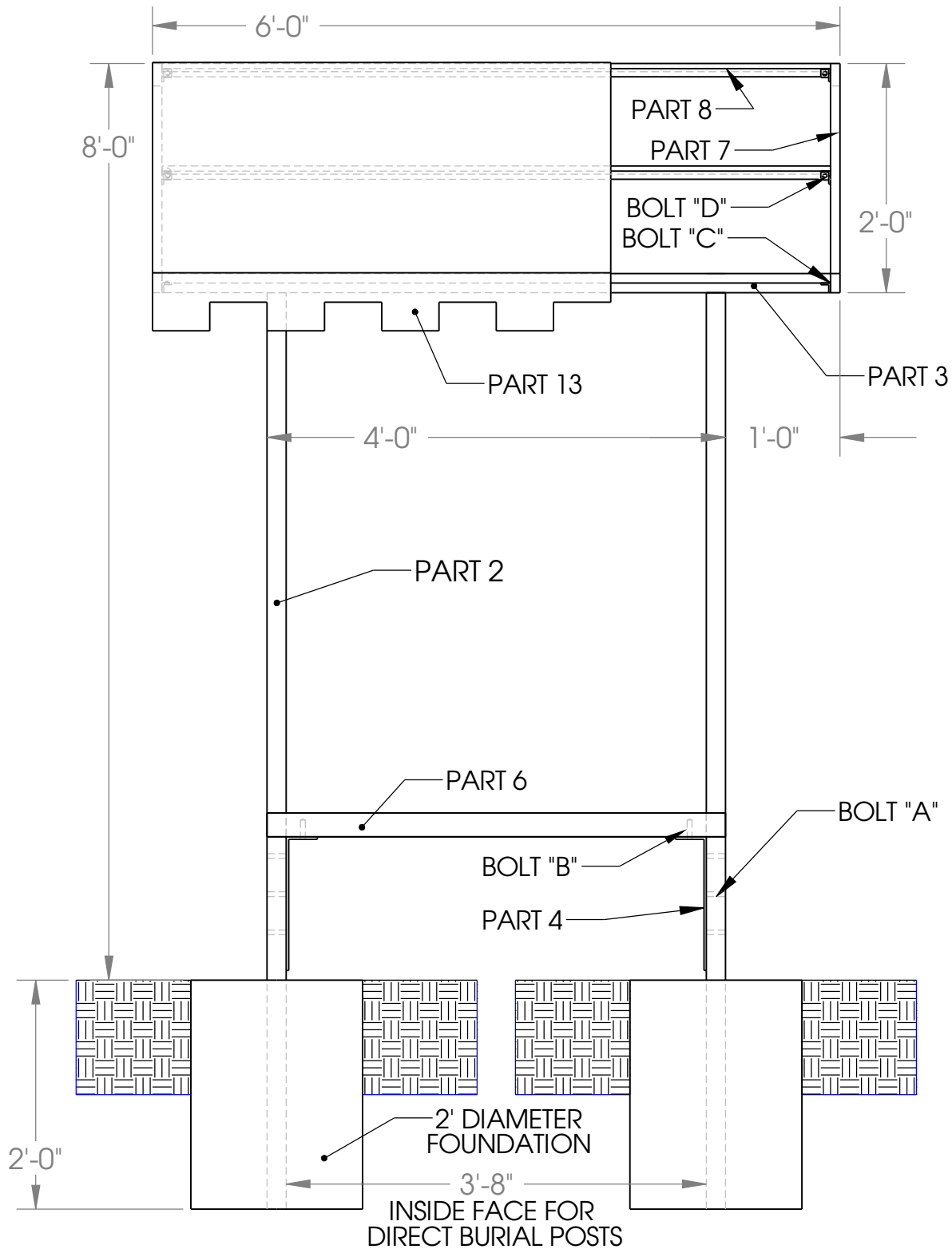
**SunTrends, Inc.**

P.O. BOX 101057  
DENVER, CO 80250  
303-744-2647

SCALE 1:16

SHEET 3 OF 5

# Cabana Bench 6' - Direct Burial



FRONT VIEW

**SunTrends, Inc.**

P.O. BOX 101057  
DENVER, CO 80250  
303-744-2647

SCALE 1:16

SHEET 2 OF 5

**PROPRIETARY AND CONFIDENTIAL**

THE INFORMATION CONTAINED IN THIS  
DRAWING IS THE SOLE PROPERTY OF  
SUNTRENDS INC.. ANY  
REPRODUCTION IN PART OR AS A WHOLE  
WITHOUT THE WRITTEN PERMISSION OF  
SUNTRENDS INC. IS  
PROHIBITED.

# Installation Guidelines

## Cabana Bench 6'-Surface Mount

**Tools Needed:** Ratchet set or wrenches.

### **Step 1: Posts and Beam**

Insert posts (Part #2) into surface mount legs (Part #14) and secure with bolts "A". Place beam (Part #3) on top of posts making sure bolt holes line up. Secure with bolts "A."

### **Step 2: Seat Plates**

Attach the (2) seat plates (Part #4) to the inside face of the posts (Part #2) with bolts "A".

### **Step 3: Durawood Bench Slats**

Attach (5) 3" x 4" Durawood bench slats (Part #6) to seat plate (Part #4) with bolt "B".

---

### **\*\*\*OPTIONAL BACK REST BENCH**

#### **Alternate Step 3: Durawood Bench Slats**

Sandwich the bent bench straps (Part #5) between seat plates (Part #4) and Durawood slats (Part #6) and secure with lag bolts "B".

---

### **Step 4: Gable Ends**

Attach gable ends (Part #7) to each end of beam (Part #3) with bolts "C".

### **Step 5: Perlins**

Attach (5) perlins (Part #8) to gable ends with bolts "D".

### **Step 8: Fabric Canopy**

1. Unfold canvas (Part #13) and drape it over the canopy frame. (The grommetted lacers are on the inside of the cover).
2. Pull the cover down over the corners making sure the canvas is square with the frame and wrinkles are pulled taut.
3. Starting at the center of the short sides (where the beam and gable meet) lace the rope through the grommets, working toward the other end. Pull the cover and rope tight as you work toward the other end. Tie off loose ends.

### **Step 7: Miscellaneous**

Use can of black spray paint (semi gloss, not included) to touch up scratches from shipping or erection.

Optional: Secure surface mount legs to concrete deck with bolts "E" (not included)



# Installation Guidelines

## Cabana Bench 6'-Direct Burial

**Tools Needed:** Ratchet set or wrenches, hand level, shovels, wheel barrows.

### **Step 1: Foundation Excavation (Direct Burial)**

Excavate holes on level ground for foundation of 1'-6" diameter by 2'-6" deep. Holes spaced at 3'-9" to center of each hole. Place approximately 6" of gravel in holes to an elevation of 2'0" deep. (Gravel used to support posts at desired elevation while concrete is being poured and to drain post sleeves.

### **Step 2: Posts and Beam**

Slide 2"x2" sleeves (part #1) on to posts (part #2) and place beam (part #3) on top of posts making sure bolt holes line up. Secure with bolts "A."

### **Step 3: Foundation Placement**

Set posts and beam on top of gravel base. Check the elevation to insure proper depth of posts. While plumbing posts vertically with a hand level, posts and beam need to be secured in place, using guy ropes or 2"x4" braces. Ropes need sufficient tautness to insure stability while pouring concrete. Concrete may then be poured, taking care not to move posts. Re-check the plumb after pouring concrete.

**NOTE:** Concrete needs 24 hours of curing time, prior to erecting rest of bench.

### **Step 4: Seat Plates**

Attach the (2) seat plates (Part #4) to the inside face of the posts (Part #2) with bolts "A".

### **Step 5: Durawood Bench Slats**

Secure (5) 3" x 4" Durawood bench slats (Part #6) to seat plate (Part #4) with bolt "B".

---

### **\*\*\*OPTIONAL BACK REST BENCH**

### **Alternate Step 5: Durawood Bench Slats**

Sandwich the bent bench straps (Part #5) between seat plates (Part #4) and Durawood slats (Part #6) and secure with lag bolts "B".

---

### **Step 6: Gable Ends**

Attach gable ends (Part #7) to each end of beam (Part #3) with bolts "C".

### **Step 7: Perlins**

Attach (5) perlins (Part #8) to gable ends with bolts "D".

**Step 8: Fabric Canopy**

1. **Unfold canvas (Part #13) and drape it over the canopy frame. (The grommetted lacers are on the inside of the cover).**
2. **Pull the cover down over the corners making sure the canvas is square with the frame and wrinkles are pulled taunt.**
3. **Starting at the center of the short sides (where the beam and gable meet) lace the rope through the grommets, working toward the other end. Pull the cover and rope tight as you work toward the other end. Tie off loose ends.**

**Step 9: Miscellaneous**

**Use can of black spray (semi gloss) paint to touch up scratches from shipping or erection.**

## PART AND BOLT SCHEDULE - CABANA 6' SURFACE MOUNT

NUMBER	QUANTITY	DESCRIPTION
2	2	1.1/2" SQ. STEEL TUBE COLUMN
3	1	1.1/2" SQ. STEEL TUBE BEAM
4	2	STEEL SEAT PLATE
6	5	3" X 4" NOMINAL DURAWOOD PLASTIC SLATS
7	2	GABLE END FRAME
8	5	1" SQ. STEEL TUBE PURLINS
13	1	FABRIC CANOPY
14	2	SURFACE MOUNT LEG
"A"	14	3/8" X 2.1/2" HEX HEAD BOLT W/ NUT & WASHER
"B"	10	3/8" X 2.1/2" HEX HEAD LAG SCREW W/ WASHER
"C"	8	3/8" X 1" HEX HEAD BOLT W/ NUT & WASHER
"D"	10	1/4" X 1.1/2" HEX HEAD BOLT W/ NUT & WASHER
"F"	4	1/2" X 3.1/2" EXPANSION BOLT (OPTION) NOT INCL.

## PART AND BOLT SCHEDULE - CABANA 6' DIRECT BURIAL

NUMBER	QUANTITY	DESCRIPTION
1	2	2" SQ. STEEL TUBE SLEEVE
2	2	1.1/2" SQ. STEEL TUBE COLUMN
3	1	1.1/2" SQ. STEEL TUBE BEAM
4	2	STEEL SEAT PLATE
6	5	3" X 4" NOMINAL DURAWOOD PLASTIC SLATS
7	2	GABLE END FRAME
8	5	1" SQ. STEEL TUBE PURLINS
13	1	FABRIC CANOPY
"A"	10	3/8" X 2.1/2" HEX HEAD BOLT W/ NUT & WASHER
"B"	10	3/8" X 2.1/2" HEX HEAD LAG SCREW W/ WASHER
"C"	8	3/8" X 1" HEX HEAD BOLT W/ NUT & WASHER
"D"	10	1/4" X 1.1/2" HEX HEAD BOLT W/ NUT & WASHER
"F"	4	1/2" X 3.1/2" EXPANSION BOLT (OPTION) NOT INCL.

